

## ● **BLAUPUNKT** NOW AT KHS!



**FIENE**  
Orange/Black



**FIETE**  
Blue/Black



**HENRI**  
Silver/Black

### ● **BLAUPUNKT** **FOLDING E-BIKE**

- Sleek durable, single die-cast foldable magnesium frame
- Low weight of 47lbs makes it easy to stow away
- Intelligent quick-release mechanism including foldable pedals and handlebar
- High quality Hydraulic disc brakes
- 20-inch puncture-proof 2.125 tires
- Pedal Assist 3-stage, controlled by LCD bike computer up to 20 mph
- Throttle Assist control on hand grip up to 20 mph
- Li-ion battery 36 V/10.5 Ah with short charging time
- Motor integrated in the rear wheel, DC 36 V/350 W, 40~45 Nm, brushless
- Sensors: cadence & speed sensor
- Driving modes: 3 levels of pedal and throttle assist,
- Range: up to 44 miles (70 km)
- UL2849 (full ebike); UL2271 (battery)
- DROP SHIP RATES: \$30/Bike or \$15/Bike for six or more
- Made in South America
- Bicycles will be Drop Shipping from North Carolina

Part #	Model	Size	P5
50-554-0200	Fiene	Orange/Black	1104.47
50-554-0201	Fiete	Blue/Black	1104.47
50-554-0202	Henri	Silver/Black	1104.47

Minimum Advertised Pricing 1599.00



**AFFORDABLE. PORTABLE. DURABLE.**

# INTRODUCTORY OFFER!

**OFFERS END FEB. 28**

## FREE FREIGHT PROMOTION

- Buy TWO Blaupunkt bikes at \$1,104.47 each
- Receive FREE FREIGHT on both bikes
- \$60.00 Value
- Free Freight offer ends February 28, 2025
- Bicycles will be Drop Shipping from North Carolina



## OR POINT-OF-SALE DISPLAY PROMOTION

- Buy TWO Blaupunkt bikes at \$1,104.47 each
- For a small freight charge of \$60, the dealer will receive ONE FREE Blaupunkt pedestal and ONE FREE Blaupunkt pull-up banner
- Point-of-Sale Display will be shipped with bicycle order
- \$90.00 Value
- Free Point-of-Sale Display offer ends February 28, 2025
- Bicycles and POS Display will be Drop Shipping from North Carolina



## BLAUPUNKT

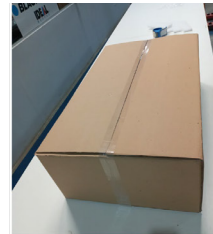


### FOLDABLE E-BIKES

The ultimate riding experience



- Light weight, 21 kg only
- Strong 250-watt maintenance
- Light weight, 21 kg only
- Strong 250-watt maintenance
- Light weight, 21 kg only
- Strong 250-watt maintenance
- Light weight, 21 kg only
- Strong 250-watt maintenance
- Light weight, 21 kg only
- Strong 250-watt maintenance
- Light weight, 21 kg only



## thousand THOUSAND JR. TODDLER

- Encourage creativity with included removable, reflective stickers pack
- Designed for riders ages 1 and up
- Dial fit system allows for precise adjustments
- 6 vents and interior cooling channels for active ventilation
- 6 colorways featuring premium finishes and materials
- Lightweight helmet at 220 grams
- Fits head sizes ranging from 45 cm to 49 cm
- Includes two sets of padding for a custom fit



Part #	Color	Size	Size	P5
01-818-1706	Bravo Blue Blue	XXS	45-49cm	26.21
01-818-1707	Plush Pink	XXS	45-49cm	26.21
01-818-1711	Speedway Creme	XXS	45-49cm	26.21
01-818-1708	Power Purple	XXS	45-49cm	26.21
01-818-1709	Green Dream	XXS	45-49cm	26.21
01-818-1710	Hello Yellow	XXS	45-49cm	26.21

Suggested retail 44.00

## thousand TRAVELER 2.0 MAG BIKE LIGHT

- Front light, handlebar mount, rear light, seat post mount
- USB-C charging cable included
- USB rechargeable with a 2 hour charge time
- Magnetic mount allows for easy removal and installation
- Simple dial allows for quick and easy switching between 3 light modes



Magnetic Mount

Part #	Color	Lens Color	P5
02-818-0010	Stealth Black	Clear	19.00
02-818-0015	Stealth Black	Red	19.00
<b>FREE SHIPPING AVAILABLE - This Drop Shipped item qualifies for PRIME</b>			
02-818-0000	Dayglow Grey	Clear	19.00
02-818-0005	Dayglow Grey	Red	19.00

Suggested retail 35.00

## thousand THOUSAND JR.

- Includes the Thousand Jr. pack of removable, reflective stickers
- Dial fit system allows for precise adjustments
- Vegan leather strap with a chin pad for extra comfort
- One-hand, no-pinch magnetic fastener
- 6 vents and interior cooling channels for active ventilation
- Colorways featuring premium finishes and materials
- Lightweight helmet at 390 grams
- Fits head sizes ranging from 49 cm to 53 cm
- Complies with U.S. CPSC Safety Standard for Bicycle Helmets
- Certified for CPSC and ASTM standard<sup>6</sup>



Part #	Color	Size	Size	P5
01-818-1700	Party Purple	XS	49-53cm	35.15
01-818-1701	Blazing Blue	XS	49-53cm	35.15
01-818-1702	Speedway Creme	XS	49-53cm	35.15
01-818-1704	Going Green	XS	49-53cm	35.15
01-818-1705	Powder Pink	XS	49-53cm	35.15

**FREE SHIPPING AVAILABLE - This Drop Shipped item qualifies for PRIME**

01-818-1703 Carbon Black XS 49-53cm 35.15

Suggested retail 59.00

## thousand MAGNETIC HELMET LIGHT

- Magnetically mounts to the back of the Heritage 2.0 helmet
- 40 lumen peak brightness
- IP54 water and dust resistance
- Solid light - 30lm - 5 hours
- Flash light - 40lm - 5 hours
- Eco pulse - 10lm - 12 hours



**FREE SHIPPING AVAILABLE - This Drop Shipped item qualifies for PRIME**

Part #	Color	Lens Color	P5
02-818-0020	Stealth Black	Red	13.82

Suggested retail 25.00

## thousand HERITAGE 2.0

- Re-engineered active ventilation and internal channeling for cooler riding
- Re-designed head shape and new internal padding configuration
- Proprietary dial fit system with multiple adjustment points
- Patented PopLock for securing your bike helmet with your lock
- Compatible with magnetic helmet tail light for added visibility
- Vegan leather straps
- One-handed magnetic fastener
- A built-in low-profile visor
- Complies with U.S. CPSC Safety Standard for Bicycle Helmets
- Certified for CPSC and ASTM standards

Part #	Color	Size	Size	P5
01-818-0000	Chic-a-Cherry Cola	Small	54-57cm	58.99
01-818-0001	Chic-a-Cherry Cola	Medium	57-59cm	58.99
01-818-0002	Chic-a-Cherry Cola	Large	59-62cm	58.99
01-818-0100	Old Skool Blue	Small	54-57cm	58.99
01-818-0101	Old Skool Blue	Medium	57-59cm	58.99
01-818-0102	Old Skool Blue	Large	59-62cm	58.99
01-818-0200	Petal Pink	Small	54-57cm	58.99
01-818-0201	Petal Pink	Medium	57-59cm	58.99
01-818-0202	Petal Pink	Large	59-62cm	58.99
01-818-0600	Carbon Black	Small	54-57cm	58.99
01-818-0601	Carbon Black	Medium	57-59cm	58.99
01-818-0602	Carbon Black	Large	59-62cm	58.99
01-818-0700	Stealth Black	Small	54-57cm	58.99
01-818-0701	Stealth Black	Medium	57-59cm	58.99
01-818-0702	Stealth Black	Large	59-62cm	58.99
01-818-0800	Navy Blue	Small	54-57cm	58.99
01-818-0801	Navy Blue	Medium	57-59cm	58.99
01-818-0802	Navy Blue	Large	59-62cm	58.99
01-818-0900	Speedway Creme	Small	54-57cm	58.99
01-818-0901	Speedway Creme	Medium	57-59cm	58.99
01-818-0902	Speedway Creme	Large	59-62cm	58.99
<b>FREE SHIPPING AVAILABLE - This Drop Shipped item qualifies for PRIME</b>				
01-818-0300	British Racing Green	Small	54-57cm	58.99
01-818-0301	British Racing Green	Medium	57-59cm	58.99
01-818-0302	British Racing Green	Large	59-62cm	58.99
01-818-0400	Dove Grey	Small	54-57cm	58.99
01-818-0401	Dove Grey	Medium	57-59cm	58.99
01-818-0402	Dove Grey	Large	59-62cm	58.99
01-818-0500	Apricot Crush	Small	54-57cm	58.99
01-818-0501	Apricot Crush	Medium	57-59cm	58.99
01-818-0502	Apricot Crush	Large	59-62cm	58.99
01-818-1000	Phantom Black	Small	54-57cm	58.99
01-818-1001	Phantom Black	Medium	57-59cm	58.99
01-818-1002	Phantom Black	Large	59-62cm	58.99

Suggested retail 99.00



## thousand CHAPTER

- Integrated Mips Safety System for added protection against rotational forces
- 30 lumen magnetic taillight with 1 hr runtime solid, 2 hrs flash
- Multi-use adapter to attach the taillight to your bike
- Visors in premium finishes to increase your field of vision
- Secret PopLock for securing your bike helmet with your lock
- Integrated dial fit system for precise adjustments
- One-handed magnetic fastener and nylon straps
- Active ventilation with 8 vents and internal channeling
- Lightweight helmet at 360g (S), 370g (M), or 410g (L)
- Complies with U.S. CPSC Safety Standard for Bicycle Helmets



Part #	Color	Size	Size	P5
01-818-1200	Club Navy	Small	54-57cm	86.38
01-818-1201	Club Navy	Medium	57-59cm	86.38
01-818-1202	Club Navy	Large	59-62cm	86.38
01-818-1300	Racer Black	Small	54-57cm	86.38
01-818-1301	Racer Black	Medium	57-59cm	86.38
01-818-1302	Racer Black	Large	59-62cm	86.38

**FREE SHIPPING AVAILABLE - This Drop Shipped item qualifies for PRIME**

01-818-1100	Skyline Grey	Small	54-57cm	86.38
01-818-1101	Skyline Grey	Small	54-57cm	86.38
01-818-1102	Skyline Grey	Small	54-57cm	86.38
01-818-1400	Desert Sage	Small	54-57cm	86.38
01-818-1401	Desert Sage	Medium	57-59cm	86.38
01-818-1402	Desert Sage	Large	59-62cm	86.38
01-818-1500	Metro White	Small	54-57cm	86.38
01-818-1501	Metro White	Medium	57-59cm	86.38
01-818-1502	Metro White	Large	59-62cm	86.38
01-818-1600	Deep Burgundy	Small	54-57cm	86.38
01-818-1601	Deep Burgundy	Medium	57-59cm	86.38
01-818-1602	Deep Burgundy	Large	59-62cm	86.38

Suggested retail 145.00

## thousand COURIER

- Vintage-styled cycling gloves offer comfortable fit and essential cushioning
- Pairs well with Heritage and Chapter helmet collections



**FREE SHIPPING AVAILABLE - This Drop Shipped item qualifies for PRIME**

Part #	Color	Size	P5
23-818-0001	Black	S	16.08
23-818-0002	Black	M	16.08
23-818-0003	Black	L	16.08

## thousand LITTLE 5

- Vintage-styled cycling gloves offer comfortable fit and essential cushioning
- Pairs well with Heritage and Chapter helmet collections



**FREE SHIPPING AVAILABLE - This Drop Shipped item qualifies for PRIME**

Part #	Color	Size	P5
23-818-1001	Tan/Beige	S	16.08
23-818-1002	Tan/Beige	M	16.08
23-818-1003	Tan/Beige	L	16.08

## thousand REMIX

- Touchscreen compatible-fabric woven throughout entire palm
- 4-way stretch, lightweight mesh on the back of hand
- Stretch cuff to easily pull gloves on and off
- UPF 50+ for maximum protection against UV rays
- Single layer leather palm
- Laser cut ventilation holes on palm for breathability
- Silicone printed "Let's Ride" detail on palm for extra grip
- Integrated cloth on thumb to wipe away dirt and sweat



**FREE SHIPPING AVAILABLE - This Drop Shipped item qualifies for PRIME**

Part #	Color	Size	P5
23-818-2000	Blue/White	XS	19.66
23-818-2001	Blue/White	S	19.66
23-818-2002	Blue/White	M	19.66
23-818-2003	Blue/White	L	19.66
23-818-2004	Blue/White	XL	19.66

## thousand BACKLOADER X 10L

- Easily mount to saddle rails & seatpost with hook & loop straps
- Roll-top closure
- Included waterproof inner bag keeps contents dry and easy access
- Built-in air release button keeps waterproof inner bag compact
- Features a light clip for extra safety



Part #	Color	Capacity	Dimensions	P5
03-818-0000	Black	10.0 L.	18.2 x 9.4 x 8.7"	57.20
03-818-0001	Olive	2L.	9.5" w x 5.0" h x 3.1" d	29.18

## SHIMANO

### 105 R7120 SHIFTER/DISC BRAKE R7170 SET

- Mechanical 12-speed dual control lever with updated ergonomics
- Light shifting operation lets you focus on the road ahead
- New blade shape allows comfort for multiple



Part #	Model	Speeds	F/R	Grams	P5
70-200-2007	ST-R7120/BR-R7170	STI, 2(x12)	Front	429	258.06
70-200-2008	ST-R7120/BR-R7170	STI, 12(x2)	Rear	429	260.40
Suggested retail 354.99					

## SHIMANO

### GRX RX820 SERIES 12-SPEED CRANKSET

- Wide array of options delivers optimal gravel gearing for variety of riders
- Optimal gearing for mixed-terrain riding



Part #	Model	Length	Rings	P5
60-200-0060	FC-RX820-1	170.0mm	40T	182.30
60-200-0061	FC-RX820-1	170.0mm	42T	182.30
60-200-0062	FC-RX820-1	172.5mm	40T	182.30
60-200-0063	FC-RX820-1	172.5mm	42T	182.30
60-200-0064	FC-RX820-1	175.0mm	40T	182.30
60-200-0065	FC-RX820-1	175.0mm	42T	182.30
Suggested retail 249.99				
60-200-0066	FC-RX820-2	170.0mm	48/31T	182.30
60-200-0067	FC-RX820-2	172.5mm	48/31T	182.30
60-200-0068	FC-RX820-2	175.0mm	48/31T	182.30
Suggested retail 249.99				

## SHIMANO

### CUES U4000 SERIES 9/10/11-SPEED CRANKSET

- Dynamic Chain Engagement+ special gear tip shape improves chain engagement
- Durable and lightweight aluminum crank arms



Part #	Model	Length	Rings	Reg.	P5
60-200-4702	FC-U4000-1	170.0mm	40T		25.79
60-200-4703	FC-U4000-1	170.0mm	42T		25.79
60-200-4704	FC-U4000-1	175.0mm	30T		25.79
60-200-4705	FC-U4000-1	175.0mm	32T		25.79
60-200-4706	FC-U4000-1	175.0mm	40T		25.79
60-200-4707	FC-U4000-1	175.0mm	42T		25.79
Suggested retail 44.99					
60-200-4709	FC-U4000-2	170.0mm	40/26T		16.14
60-200-4710	FC-U4000-2	170.0mm	36/22T		16.14
Suggested retail 29.99					
60-200-4716	FC-U4010-2B	175.0mm	36/22T		22.58
60-200-4720	FC-U4010-2	170.0mm	40/26T		22.58
Suggested retail 39.99					

## SHIMANO DEORE CUPSET

- Bottom bracket cups for Shimano cranksets with integrated axle



Part #	Model	Size	P5
63-200-4711	SM-MT501B	68/73mm	9.98

## SHIMANO

### MT900E DISC BRAKE ROTOR

- High-performance and consistent brake performance
- New arm shape is more robust, leading to quieter operation
- ICE TECHNOLOGIES FREEZA construction achieves superb heat dissipation



CenterLock	Model	Diameter	Series	Mount	P5
86-200-7184	MT900E	140mm	XTR	CenterLock	59.90
86-200-7185	MT900E	160mm	XTR	CenterLock	59.90
86-200-7186	MT900E	180mm	XTR	CenterLock	63.97
86-200-7187	MT900E	203mm	XTR	CenterLock	63.97

## SHIMANO

### MT800E XT DISC BRAKE ROTOR

- Ultimate heat dissipation provides superb, consistent braking performance
- New disc brake rotor construction boosts heat dissipation and reduces fade
- Easy disc brake rotor installation with spline mount and lock ring



CenterLock	Model	Diameter	Series	Mount	P5
86-200-6070	RT-MT800E	140mm	XT	CenterLock	40.72
86-200-6071	RT-MT800E	160mm	XT	CenterLock	40.72
86-200-6072	RT-MT800E	180mm	XT	CenterLock	44.38
86-200-6073	RT-MT800E	203mm	XT	CenterLock	49.69

## SHIMANO

### PROFESSIONAL DISC BRAKE BLEED KIT

- Kit includes syringe, base, road funnel, mtb funnel and 4 spacers
- Compatible with bleeding nipples and bleeding sockets



Part #	Model	Includes	Qty.	P5
86-200-4505	TL-BR	Bleed Kit	1	35.29

## SHIMANO

### BRAKE BLEED SYRINGE

- Syringe unit with hose and shut off clip



Part #	Model	Includes	Qty.	P5
86-200-4501	TL-BR001	Syringe/hose/clip	1	25.09

## SHIMANO

### ROAD DISC FUNNEL

- Funnel unit for road disc with M7 screw
- Includes base, funnel, lid and stopper



Part #	Model	Fits	Includes	P5
86-200-4502	TL-BR002	Road	Funnel Unit	9.40

## SHIMANO

### XTR M9100 12-SPEED CRANKSET

- 12-Speed
- Hollowtech II
- Lighter and stiffer design
- Easily install/change chainring with direct mount and one-key release
- 162.0 mm Q-factor
- Chainring and Bottom Bracket sold separately



Chainrings  
Not Included

Part #	Model	Length	Rings	P5
60-200-8331	FC-M9100-1	165.0mm	Not Included	321.77
60-200-8332	FC-M9100-1	170.0mm	Not Included	321.77
60-200-8333	FC-M9100-1	175.0mm	Not Included	321.77
Suggested retail 434.99				
60-200-8341	FC-M9120-1	165.0mm	Not Included	321.77
60-200-8342	FC-M9120-1	170.0mm	Not Included	321.77
60-200-8343	FC-M9120-1	175.0mm	Not Included	321.77
Suggested retail 434.99				
60-200-8344	FC-M9125	165.0mm	Not Included	356.76
Suggested retail 479.99				

## SHIMANO

### XTR M9100 DISC BRAKE SET

- Quicker rebound between actions maintains rider concentration
- Greater flexibility and action-optimized cockpit layout
- Update brake lever shape
- High-performance brake control
- Higher braking force with reduced input force at finger
- Compatible with I-Spec EV shift levers
- Highly linear response, and braking power, stroke



BL-M9100

BR-M9100

Part #	Model	F/R	Mount	P5
80-200-7453	BR-M9100/BL-M91000	Front	Post Mount	236.38
80-200-7454	BR-M9100/BL-M91000	Rear	Post Mount	241.08
Suggested retail 324.99				

## SHIMANO

### TOURNEY 6/7 SPEED REAR DERAILLEUR

- 6/7-Speed compatible
- RD-TY500-SGS



Part #	Model	Speed	Cage	Mount	P5
72-200-0490	RD-TY500-SGS	6/7	Long	Direct Mount	7.90

## SHIMANO

### TOURNEY 6/7 SPEED REAR DERAILLEUR

- 6/7-Speed compatible
- RD-TY500-SGS

AXLE MOUNT



Part #	Model	Speed	Cage	Mount	P5
72-200-0480	RD-TY500-SGS	6/7	Long	Axle Mount	7.90

## SHIMANO

### XT M8100 12-SPEED CRANKSET

- Rigid and lightweight design boosts trail-riding enjoyment
- Hollow forged crank
- HOLLOWTECH II
- DYNAMIC CHAIN ENGAGEMENT+ profile improves chain engagement and retention



Chainrings  
Not Included

Part #	Model	Length	Rings	P5
60-200-7187	FC-M8100-1	165.0mm	Not Included	113.06
60-200-7188	FC-M8100-1	170.0mm	Not Included	113.06
60-200-7189	FC-M8100-1	175.0mm	Not Included	113.06
Suggested retail 153.99				
60-200-7191	FC-M8120-1	165.0mm	Not Included	113.06
60-200-7192	FC-M8120-1	170.0mm	Not Included	113.06
60-200-7193	FC-M8120-1	175.0mm	Not Included	113.06
Suggested retail 153.99				
60-200-7196	FC-M8130-1	170.0mm	Not Included	113.06
60-200-7197	FC-M8130-1	175.0mm	Not Included	113.06
Suggested retail 153.99				

## SHIMANO

### XT M8100 DISC BRAKE KITS

- BL-M8100
- Intuitive and versatile braking keeps your focus on the trail
- Optimized lever axle position with refined ergonomics
- Greater flexibility and action-optimized cockpit layout
- Quicker brake engagement with shorter free stroke
- Rider tuned adjustment
- Toolless reach adjust



BL-M8100

BR-M8100

Part #	Model	F/R	Mount	P5
80-200-6751	BL-M8100/BR-M8100	Front	Post Mount	122.55
80-200-6752	BL-M8100/BR-M8100	Rear	Post Mount	127.24
Suggested retail 169.99				

## SHIMANO

### HG93 9-SPEED CHAIN

- Road or Mountain
- Zinc alloy plated



Part #	Model	Series	Color	P5
64-200-2010	CN-HG93	XT/Ultegra	Silver/Gray	23.94
Suggested retail 42.99				

## SHIMANO

### HG53 9-SPEED CHAIN

- Optimized chain for HG sprocket
- Can be used with IG (Interactive Glide) cassette but not IG chainrings



Part #	Model	Series	Color	P5
64-200-0700	CN-HG53	Deore/Tiagra	Black/Gray	16.03
Suggested retail 29.99				

## KRYPTONITE™

### NEW YORK NOOSE & EVOLUTION DISC LOCK

- 12 mm six sided chain links made of 3T Manganese steel
- Includes a larger cinch ring allowing you have a longer lock up length
- Disc lock features 14 mm hardened MAX-Performance steel shackle
- Patented, hardened oval crossbar design is stronger than a round tube
- Hardened Double Deadbolt design
- Provides additional protection against cut & twist attacks
- Highest security disc style cylinder
- Technology provides increased pick and drill security



Part #	Model	Type	Length	P5
08-001-2190	NY Cinch Noose 1213	Key	4'	101.39
08-001-2210	NY Noose Cinch 1275	Key	2.5'	77.54

## KRYPTONITE™

### NEW YORK CHAIN & EVOLUTION DISC LOCK

- 10mm six-sided chain links made from 3T MANGANESE STEEL
- Patent-pending END LINK DESIGN
- HIGH SECURITY DISC-STYLE CYLINDER is pick and drill resistant
- Patented, reinforced OVAL CROSSBAR LOCK HEAD
- SLIDING DUSTCOVER protects and extends cylinder life
- 3 STAINLESS STEEL KEYS
- Durable WEATHER-RESISTANT nylon sleeve prevents scratches
- Key Safe Program
- 47" chain length

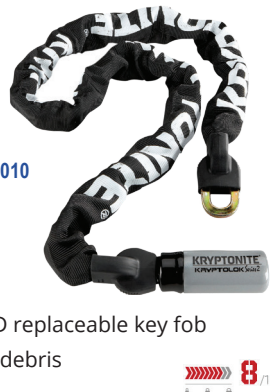


Part #	Model	Type	Length	P5
08-001-3070	Evo 1012	Key	47"	68.13

## KRYPTONITE™

### EVOLUTION INTEGRATED CHAIN

- 10 mm six-sided chain links made of 3T Manganese steel
- Patented design secures chain directly to hardened deadbolt
- Offers no 'weak' link in the chain
- Higher security disc style cylinder
- Weather-resistant nylon sleeve prevents scratches to painted finishes
- Includes 3 stainless steel keys with one LED replaceable key fob
- Sliding dust cover to protect from dirt and debris
- Anti-Theft Protection Offer - \$3000



Part #	Model	Type	Length	Number	P5
08-001-3010	Evo 1090	Key	35.5"		59.63

## KRYPTONITE™

### EVOLUTION 790 FOLD

- 5.4mm Hardened Steel Bars with tightened rivets
- Durable rubber coating keeps your bike safe
- Easy to use bracket makes it easy to store and access your lock
- Mounting bracket snugly holds lock and prevents rattling while riding
- Audible click signals that your lock is secured



Part #	Model	Type	Length	Color	P5
08-001-3580	Evolution 790 Folding		35.4"	Orange	89.47

## KRYPTONITE™

### KEEPER 585 COMBO FOLD

- 3 mm hardened steel-links for moderate security lock ups
- Includes easy to install transport bracket
- Anti-Theft Protection Offer - \$500



Part #	Model	Type	Length	Color	P5
08-001-3570	Keeper 585 Combo Fold	Combination	33.5"	Black	49.88

## KRYPTONITE™

### RING LOCK & 512 PLUG CHAIN

- Non Key Retraining Ring Lock and Plug In system
- Plug in system prevents both roll away and lift theft
- Extra wide opening of 58 mm
- 5.5 mm steel links 120 cm in length
- Cinch loop for longer length lock



Part #	Model	Type	Length	P5
08-001-3620	Ring Lock & 512 Plug Chain	Ring Lock	120 cm	32.51

## KRYPTONITE™

### EVOLUTION U-LOCK

- New patented Double Deadbolt design
- Provides extra protection against cut & twist attacks
- 14 mm hardened max-performance steel shackle
- Includes FlexFrame-U bracket
- 3 Stainless steel keys, including one led replaceable key fob
- Patented sliding dust cover
- Key Safe Program



Part #	Model	Type	Size	P5
08-001-1850	Evolution LS	Key	4.0 x 11.5"	67.21



## KRYPTONITE™

### STREET F-500/AVENUE R-45 COMBO

- Headlight: Street F-500
- 500 lumen rechargeable headlight (Micro USB cable included)
- Modes: High/Medium/Low Steady, DayTime/NightTime Pulse, Economic Flash
- Run times: 1.5 hrs (High Steady - 500 lm), 3 hrs (Medium Steady - 250 lm), 12 hrs (Low Steady - 80 lm), 8 hrs (DayTime Pulse - 500 lm), 10 hrs (NightTime Pulse - 180/80 lm), 24 hrs (Economic Flash - 80 lm)
- Taillight: Avenue R-45
- 45 lumen rechargeable taillight (Micro USB cable included)
- Modes: High Flash, Low Steady, DayTime/NightTime Pulse. Economic Flash
- Run times: 1.5 hrs (High Flash - 45 lm), 2 hrs (Low Steady - 20 lm),



Part #	Model	F/R	Lens	P5
02-001-0410	Street F-500/Avenue R-45	Pair	Clear/Red	41.25

Suggested retail 77.95

## KRYPTONITE™

### INCITE X3/XR LIGHT COMBO

- Headlight: X3
- Double lens headlight - higher quality, precise light distribution
- LED strip showing battery capacity
- Taillight: XR
- Tail light guide for increased visibility & safety
- Flexible mounting bracket rotates 180degree seatstay mounting
- Memory mode
- USB charging cables included



Part #	Model	Color	Lens	P5
02-001-0500	Incite X3/XR	Black/Grey	Clear/Red	42.30

Suggested retail 79.95

## KRYPTONITE™

### AVENUE F-100 COB/AVENUE R-50 COB COMBO

- Headlight: Avenue F-100 COB
- 100 lumen rechargeable headlight (Micro USB cable included)
- Modes: High/Medium/Low Steady, DayTime/NightTime Pulse, Economic Flash
- Run times: 2.25 hrs (High Steady - 100 lm), 4.5 hrs (Medium Steady - 50 lm), 11.25 hrs (Low Steady - 20 lm), 9 hrs (DayTime Pulse - 100 lm), 7.5 hrs (NightTime Pulse - 60/20), 22.5 hrs (Economic Flash - 20 lm)
- Taillight: Avenue R-50 COB
- 50 lumen rechargeable taillight (Micro USB cable included)
- Modes: High Flash, Med/Low Steady, DayTime/NightTime Pulse.



Part #	Model	F/R	Lens	P5
02-001-0380	Avenue F-100/Avenue R-50 COB	Pair	Clear/Red	31.73

Suggested retail 59.95

## KRYPTONITE™

### INCITE X6 HEADLIGHT

- Double lens technology provides high quality precise light distribution
- Auto light sensor measures ambient brightness adjusts mode automatically
- Display shows remaining battery run time
- Battery symbol in display starts flashing at less than 20%
- Side visibility for increased visibility & safety



Part #	Model	Color	Lens	P5
02-001-0101	Incite X6	Black/Grey	Clear	42.30

Suggested retail 79.95

## KRYPTONITE™

### ALLEY F-650

- 650 lumen rechargeable headlight (Micro USB cable included)
- Modes: High/Medium/Low Steady, DayTime/NightTime Pulse, Economic Flash
- Run times: 2 hrs (High Steady - 650 lm), 4 hrs (Medium Steady - 325 lm), 12 hrs (Low Steady - 100 lm), 8 hrs (DayTime Pulse - 650 lm), 10 hrs (NightTime Pulse - 300/100 lm), 26 hrs (Economic Flash - 100 lm)



Part #	Model	F/R	Lens	P5
02-001-0090	Alley F-650	Front	Clear	34.03

Suggested retail 64.95

## KRYPTONITE™

### AVENUE F-100 COB

- 100 lumen rechargeable headlight (Micro USB cable included)
- COB (Chips on Board) LED Technology
- Modes: High/Medium/Low Steady, DayTime/NightTime Pulse, Economic Flash
- Run times: 2.25 hrs (High Steady - 100 lm), 4.5 hrs (Medium Steady - 50 lm), 11.25 hrs (Low Steady - 20 lm), 9 hrs (DayTime Pulse - 100 lm), 7.5 hrs (NightTime Pulse - 60/20), 22.5 hrs (Economic Flash - 20 lm)
- Side illumination ports allow cyclist to be seen when riding across traffic



Part #	Model	F/R	Lens	P5
02-001-0055	Avenue F-100 COB	Front	Clear	18.50

Suggested retail 34.95

## KRYPTONITE™

### INCITE XBR TAIL LIGHT

- Built-in acceleration sensor
- when speed is reduced by more than 3.6mph, an additional LED switches on
- Light guide for increased visibility & safety
- Brake light is 3X brighter than normal output in steady mode
- New bracket with flexible mounting options; rotate 180 seatstay mount
- Additional optic in front of LED at lower end of the light guide
- USB charging cable included



Part #	Model	Color	Lens	P5
02-001-0296	Incite XBR	Black/Grey	Red	23.79

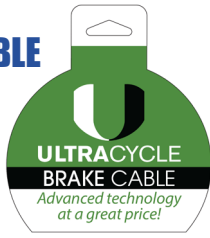
Suggested retail 44.95

# ULTRACYCLE UPDATED CABLE PACKAGING

## ULTRACYCLE

### INDIVIDUAL GALVANIZED BRAKE CABLE

- Built to withstand the toughest conditions
- Cables are user-friendly, making the replacement process a breeze
- Various lengths including tandem length



Part #	Material	Fits	Dia.	Length	P5
85-079-2001	Galvanized	Road/MTB	1.6mm	1700mm	1.29
85-079-2011	Galvanized	Road/MTB	1.6mm	2800mm	1.05
85-079-2211	Slick Galvanized	Shimano/SRAM	1.5mm	1700mm	2.29
85-079-2221	Slick Galvanized	Shimano/SRAM	1.5mm	2750mm	2.75
85-079-2191	Slick Galvanized	MTB	1.5mm	1700mm	1.71
85-079-2201	Slick Galvanized	MTB	1.5mm	2750mm	2.19
85-079-2071	Slick Stainless Steel	Shimano/SRAM	1.5mm	1700mm	2.19
85-079-2091	Slick Stainless Steel	Shimano/SRAM	1.5mm	3500mm	3.51
85-079-2061	Slick Stainless Steel	MTB	1.5mm	1700mm	2.15
85-079-2081	Slick Stainless Steel	MTB	1.5mm	3500mm	3.51

## ULTRACYCLE

### BOX GALVANIZED BRAKE CABLES

- Built to withstand the toughest conditions
- Cables are user-friendly, making the replacement process a breeze
- 1700mm



Part #	Material	Fits	Dia.	Length	P5
85-079-2181	Galvanized	Shimano/SRAM	1.5mm	1700mm	34.99
85-079-2101	Galvanized	MTB	1.5mm	1700mm	34.99
85-079-2121	Slick Galvanized	Shimano/SRAM	1.5mm	1700mm	53.89
85-079-2131	Slick Galvanized	MTB	1.5mm	1700mm	55.98
85-079-2141	Slick Stainless Steel	Shimano/SRAM	1.5mm	1700mm	99.92
85-079-2151	Slick Stainless Steel	MTB	1.5mm	1700mm	99.92

## ULTRACYCLE

### UNIVERSAL BRAKE CABLE AND HOUSING

- Everything you need to replace your old crusty cables
- Galvanized steel resists corrosion



Part #	Material	Fits	Dia.	Length	P5
85-079-2021	Galvanized	Universal	1.5mm	1700mm	2.67

## ULTRACYCLE

### BOX LINED/LUBED BRAKE HOUSING

- Pre-lubed and lined
- Bulk filebox
- 50M length



Part #	Type	Color	Size	Length	P5
85-079-3011	Road / MTB	Black	5.0mm	50m	41.78



## ULTRACYCLE

### BASIC GALVANIZED DERAILLEUR CABLE

- Built to withstand the toughest conditions
- Cables are user-friendly, making the replacement process a breeze
- Various lengths including tandem length



Part #	Material	Fits	Dia.	Length	P5
85-079-2031	Galvanized	Shimano/SRAM	1.2mm	2100mm	0.79
85-079-2041	Galvanized	Shimano/SRAM	1.2mm	3050mm	1.27
85-079-1801	Slick Galvanized	Shimano/SRAM	1.1mm	2300mm	1.67
85-079-1811	Slick Galvanized	Shimano/SRAM	1.1mm	3100mm	2.45
85-079-1821	Stainless Steel	Shimano/SRAM	1.1mm	2100mm	2.28
85-079-1831	Slick Stainless Steel	Shimano/SRAM	1.1mm	3100mm	2.93

## ULTRACYCLE

### BOX GALVANIZED DERAILLEUR CABLES

- Built to withstand the toughest conditions
- Cables are user-friendly, making the replacement process a breeze
- 2100mm



Part #	Material	Fits	Dia.	Length	P5
85-079-2111	Galvanized	Shimano/SRAM	1.2mm	2100mm	35.02
85-079-2161	Slick Galvanized	Shimano/SRAM	1.1mm	2100mm	55.91
85-079-2171	Slick Stainless Steel	Shimano/SRAM	1.1mm	2100mm	78.85

## ULTRACYCLE

### DERAILLEUR CABLE AND HOUSING

- Everything you need to replace your old crusty cables
- Galvanized steel resists corrosion
- Shimano/SRAM compatible



Part #	Material	Fits	Dia.	Length	P5
85-079-2051	Galvanized	Shimano/SRAM	1.2mm	1700mm	3.16

## ULTRACYCLE

### BOX LINED/LUBED DERAILLEUR HOUSING

- Pre-lubed and lined
- Bulk filebox
- 50M length



Part #	Type	Color	Dia.	Length	P5
85-079-3031	Lined/Lubed	Black	4.0mm	50m	55.89

**ULTRACYCLE**

## ALUMINUM CABLE TIPS

- Say goodbye to frayed and unruly cables



Part #	Dia.	Color	Qty.	P5
<b>85-079-1051</b>	1.2mm	Silver	500/bottle	8.71
<b>85-079-1061</b>	1.8mm	Silver	500/bottle	8.91
<b>Suggested retail/MAP 17.49</b>				
<b>85-079-1071</b>	1.8mm	Black	500/bottle	13.58
<b>Suggested retail/MAP 27.49</b>				

**ULTRACYCLE**

## PREMIUM BRASS BRAKE CABLE FERRULES

- Made from high-quality brass
- Enhance your braking system's reliability and precision



Part #	Dia.	Color	Qty.	P5
<b>85-079-1201</b>	5.0mm open	Chrome	200/bottle	16.78
<b>Suggested retail/MAP 33.99</b>				

**ULTRACYCLE**

## BRASS DERAILLEUR HOUSING FERRULES

- Convenient bottle dispenser



Part #	Dia.	Type	Color	Qty.	P5
<b>85-079-1121</b>	4.0mm open	Brass	Black	50/bottle	11.18
<b>Suggested retail/MAP 22.49</b>					

**ULTRACYCLE**

## PLASTIC DERAILLEUR HOUSING FERRULES

- Convenient bottle dispenser



Part #	Dia.	Type	Color	Qty.	P5
<b>85-079-1111</b>	4.0mm open	Resin	Black	100/bottle	11.13
<b>Suggested retail/MAP 22.49</b>					

**ULTRACYCLE**

## ALUMINUM DERAILLEUR HOUSING FERRULES

- Convenient bottle dispenser

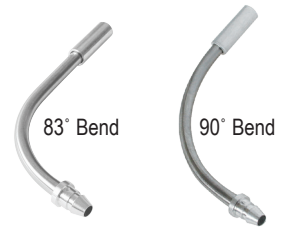


Part #	Dia.	Type	Color	Qty.	P5
<b>85-079-1101</b>	4.0mm open	Aluminum	Black	50/bottle	16.72
<b>Suggested retail/MAP 33.49</b>					

**ULTRACYCLE**

## V-BRAKE NOODLE

- Works on all linear/v-brakes
- No rubber boot included
- Shop pack/10



Part #	Bend	Color	Qty.	P5
<b>86-079-1201</b>	83	Silver	10	11.17
<b>86-079-1211</b>	90	Silver	10	11.14
<b>Suggested retail/MAP 22.49</b>				

**ULTRACYCLE**

## V-BRAKE NOODLE BOOT

- Rubber boot for linear/v-brake noodles
- Shop pack/10



Part #	Color	Qty.	P5
<b>86-079-1221</b>	Black	10	2.78
<b>Suggested retail/MAP 8.00</b>			

**ULTRACYCLE**

## CABLE DONUTS

- Protects your frame from pesky cable scratches
- Shop bottle



Part #	Dia.	Color	Qty.	P5
<b>85-079-1001</b>	1.2mm	Black	200 groups of 3 / bottle	19.06
<b>Suggested retail/MAP 40.99</b>				

**ULTRACYCLE**

## ROTATING HOUSING HOOKS

- Two halves rotate 360 degrees
- Fits 5.5 mm and smaller outer housings



Part #	Fits	Color	Qty.	P5
<b>85-079-1401</b>	5.5mm housing	Black	100	20.33
<b>Suggested retail/MAP 0.00</b>				

**ULTRACYCLE**

## BRAKE SAFE

- Works with mechanical disc or v-brakes
- Helps to minimize over-the-bar incidents
- For use on front wheel
- Installs inline on brake housing
- Works in all weather conditions
- No adjustments or maintenance



Part #	Model	F/R	Color	P5
<b>86-079-9990</b>	BrakeSafe	Front	Black	10.77
<b>Suggested retail/MAP 21.99</b>				

# ULTRACYCLE NEW TIRES & LINERS!

## ULTRACYCLE

### TIRE LINERS

- Flat protection from glass, thorns and other road hazards
- Bio-degradable and reusable
- Pack of two

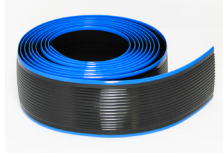


Part #	Color	Dia.	Width	Qty.	P5
48-079-7000	Brown	24" / 26"	1.9-2.25"	2	13.49
48-079-7001	Gold	27.5/650b/29"/700c	1.5-1.9" / 32-42mm	2	13.99
48-079-7002	Purple	27.5/650b/29"	1.9-2.35"	2	15.49
48-079-7003	Green	20"	1.75-2.125"	2	10.49
48-079-7004	Blue	27" / 700c	2.5-32mm	2	9.16

## ULTRACYCLE

### HD TIRE LINERS

- Flat protection from glass, thorns and other road hazards
- Serrated back keeps liner in place
- Pack of two

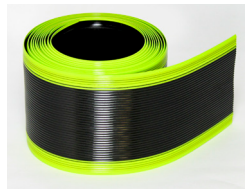


Part #	Color	Dia.	Width	Qty.	P5
48-079-7020	Aqua	27.5 / 29"	2.1-2.6"	2	29.99

## ULTRACYCLE

### FAT TIRE LINERS

- Flat protection for Fat Tire bikes
- Serrated back keeps liner in place
- Pack of two

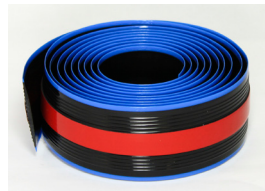


Part #	Color	Dia.	Width	Qty.	P5
48-079-7050	Lime	20"	2.35-3.0"	2	19.99
48-079-7051	Lime	29"	2.35-3.0"	2	29.99
48-079-7053	Tan	29"	3.1-4.0"	2	43.99
48-079-7054	Teal	20"	4.1-5.0"	2	47.99
48-079-7055	Teal	29"	4.1-5.0"	2	50.99

## ULTRACYCLE

### HD e-BIKE TIRE LINERS

- Flat protection for Fat Tire and e-Bikes
- 3M adhesive prep and double sided tape is included to minimize movement
- Pack of two



Part #	Color	Dia.	Width	Qty.	P5
48-079-7090	Aqua	27.5 / 29"	2.1-2.6"	2	39.99

## ULTRACYCLE

### e-BIKE FAT TIRE LINERS

- Flat protection for Fat Tire and e-Bikes
- Flat protection for Fat Tire and e-Bikes
- Pack of two



Part #	Color	Dia.	Width	Qty.	P5
48-079-7120	Lime-e	20"	2.35-3.0"	2	32.99
48-079-7121	Lime-e	29"	2.35-3.0"	2	38.99
48-079-7122	Tan-e	20"	3.1-4.0"	2	49.99
48-079-7123	Tan-e	20"-29"	3.1-4.0"	2	52.99
48-079-7124	Teal-e	20"	4.1"-5.0"	2	55.99
48-079-7125	Teal-e	20"-29"	4.1"-5.0"	2	59.99

## ULTRACYCLE

### MINIKIN GT HD w/3mm PUNCTURE PROTECTION

- Smooth, fast rolling tread
- Siping for wet weather performance
- Rounded profile for easy, confident cornering
- Specially textured shoulders for enhanced cornering grip



### MINIKIN GT HD

### reflective sidewall strip

#### 3mm PUNCTURE PROTECTION

Part #	Dia.	Width	Bead	Sidewall	P5
46-079-2052	20" / 406	4.00"	Wire	Reflective Strip	24.99

## ULTRACYCLE

### HARCOURT

- 5mm thick puncture protection belt in tread
- Reflective sidewall keeps you safe on the streets
- Chevron tread pattern provides traction in wet weather
- Tread design works well on asphalt, and mixed terrain
- 27 TPI



### HARCOURT

### reflective sidewall strip

#### 5mm PUNCTURE PROTECTION

Part #	Dia.	Width	Bead	Sidewall	P5
46-079-7075	700c	38mm	Wire	Reflective Strip	14.99
46-079-7076	700c	35mm	Wire	Reflective Strip	14.99

## ULTRACYCLE

### CENTRAL

- Designed with features for Urban commuting
- 5mm thick puncture protection belt in tread
- Reflective sidewall keeps you safe on the streets
- Chevron tread pattern provides traction in wet weather
- 27 TPI



### CENTRAL

### reflective sidewall strip

#### 5mm PUNCTURE PROTECTION

Part #	Dia.	Width	Bead	Sidewall	P5
46-079-2696	26" / 559	1.75"	Wire	Reflective Strip	14.99
46-079-7060	700c	38mm	Wire	Reflective Strip	14.99
46-079-7065	700c	35mm	Wire	Reflective Strip	14.99
46-079-7070	700c	32mm	Wire	Reflective Strip	14.99

## ULTRACYCLE

### RAPID PASSAGE FOLDING

- Sleek and low-profile tread pattern reduces rolling resistance
- Rapid Passage's tread ensures superior traction, even in wet conditions
- Lighter tires mean faster acceleration and easier climbs
- Folding bead
- 60 TPI

### RAPID PASSAGE



Part #	Dia.	Width	Bead	Sidewall	P5
46-079-7050	700c	28mm	Folding	Black	17.49

# ULTRACYCLE ESSENTIAL ULTRACYCLE

## ULTRACYCLE

### THRUST

- 32mm steel barrel and composite base
- Easy-to-read gauge
- Fits Schrader and Presta valves
- Great pump at a great price



Part #	Model	Color	PSI	P5
13-079-1310	Thrust	Black	160 PSI	19.25
Suggested retail/MAP 39.99				

## ULTRACYCLE

### CO2 CARTRIDGES

- Threaded stem
- Rapid Tire Inflation
- Reliable Performance
- Easy to Use
- Some bulk options include a Countertop P.O.P display box



Part #	Size	Type	Qty.	P5
13-079-5160	16g	Threaded	20/P.O.P. box	31.40
Suggested retail/MAP 59.99				
13-079-5570	16g	Threaded	100/Case	104.24
Suggested retail/MAP 229.99				
13-079-5161	25g	Threaded	20/P.O.P. box	77.49
Suggested retail/MAP 149.99				
13-079-5571	25g	Threaded	100/Case	336.00
Suggested retail/MAP 599.99				

## ULTRACYCLE

### FAT BIKE RIM STRIPS

- Lightweight durable PVC
- Sold individually



Part #	Wheel Size	Fits	Qty.	P5
48-112-5300	26"	60-70 mm rims	1	4.31
48-112-5400	26"	75-85 mm rims	1	4.31
48-112-5500	26"	100 mm rims	1	4.31
Suggested retail/MAP 8.99				

## ULTRACYCLE

### RUBBER RIM STRIPS

- 25 per bunch



Part #	Wheel Size	Width	Qty.	P5
48-112-2400	16"	20mm	25/bag	11.90
48-112-3700	20"	20mm	25/bag	11.90
48-112-4700	24"	20mm	25/bag	11.90
48-112-5200	26"	12mm	25/bag	11.90
48-112-5250	26"	16mm	25/bag	11.90
48-112-5700	26"	20mm	25/bag	11.90
48-112-6400	700c	12mm	25/bag	11.90
48-112-7000	29"/700c	20mm	25/bag	11.90
Suggested retail/MAP 23.99				

## ULTRACYCLE

### BIG GAUGE PUMP w/EZEZ HEAD

- Unique patented pump head for easy use exclusive to Ultracycle
- EZEZ pump head makes using it twice as easy as other designs
- Easy-to-read 100mm gauge
- Fits Schrader and Presta valves
- 32mm steel body
- Excellent family pump....easy to read and use for the whole family



Part #	Model	Color	PSI	P5
13-079-9999	2022 Pump	Black	160 PSI	24.99
Suggested retail/MAP 44.99				

## ULTRACYCLE

### WATER BOTTLE CAGES

- 6 mm aluminum
- Powder coated
- 63 grams



Part #	Color	Qty.	P5
05-110-0000	Gloss Black	1	2.66
05-110-0050	Matte Black	1	2.66
05-110-0010	White	1	2.66
05-110-0020	Silver (anodized)	1	2.66
05-110-0030	Red	1	2.66
05-110-0040	Blue	1	2.66
Suggested retail/MAP 9.99			

## ULTRACYCLE

### 14 FUNCTION MULTI-TOOL

- 2, 2.5, 3, 4, 5, 6, 8 mm hex wrenches
- Phillips & flathead screwdrivers
- T25 Torx bit
- Chain Tool
- Three spoke wrenches



Part #	Model	P5
16-123-2000	14 Function	11.85
Suggested retail/MAP 23.99		

## ULTRACYCLE

### TIRE LEVERS

- Strong and lightweight molded nylon
- 3 levers per set



Part #	Model	Qty.	P5
16-123-0000	Tire Levers	3/Set	2.06
Suggested retail/MAP 7.99			

## ULTRACYCLE

### STORAGE HOOKS

- 2 wood-screw type hooks per package



Part #	Color	Fits	Qty.	P5
16-123-0100	Black	2" wide tires	2	3.50
Suggested retail/MAP 5.49				

**TIOGA**  
**UNDERCOVER**  
**STRATUM HTS CARBON**

**20% OFF!**



- Made from dense, closed cell EVA foam
- The base is shaped to minimize pressure on soft tissues
- Designed to perfectly position sit-bones during hard pedaling or climbing
- Optimized for extended, seated comfort

Part #	Rails	Color	Grams	Reg.	20% OFF
40-202-0821	HTS Carbon Rail	Black	150	132.08	98.40

**TIOGA**  
**UNDERCOVER**  
**STRATUM CARBON**

- Carbonite SpyderWeb Base with Bio X-Pad SL
- Tapered variable thickness for enhanced sit-bone and inner thigh support
- ThermoForm all-weather synthetic cover vacuum formed for seamless finish
- Carbon rails



**CLOSEOUT!**

Part #	Rails	Color	Grams	Reg.	SALE
40-202-0820	Hollow Carbon	Black	150	118.91	35.93

**TIOGA**  
**UNDERCOVER STRATUM TI**

- Carbonite SpyderWeb base
- Bio X-Pad ReActive cushioning system



**CLOSEOUT!**

Part #	Rails	Color	Grams	Reg.	SALE
40-202-0810	Ti	Black	190	82.29	26.21

**TIOGA**  
**UNDERCOVER STRATUM**

- Carbonite SpyderWeb Base with Bio X-Pad high density foam padding
- Tapered variable thickness for enhanced sit-bone and inner thigh support
- ThermoForm all-weather synthetic cover vacuum formed for seamless finish
- Bio X-Pad ReActive cushioning system



**CLOSEOUT!**

Part #	Rails	Color	Grams	Reg.	SALE
40-202-0800	CrMoly	Black	240	59.08	19.12

**TIOGA**  
**UNDERCOVER BOOST CRMO**

- Carbonite SpyderWeb base
- Bio X-Pad ReActive cushioning system



**CLOSEOUT!**

Part #	Model	Rails	Color	Grams	Reg.	SALE
40-202-0700	Undercover Boost	CroMoly	Black	255	59.08	19.12

**TIOGA**  
**UNDERCOVER BOOST TI**

- Carbonite SpyderWeb base
- Bio X-Pad SL cushioning system



**CLOSEOUT!**

Part #	Model	Rails	Color	Grams	Reg.	SALE
40-202-0710	Undercover Boost	Ti	Black	195	82.29	26.21

**TIOGA**  
**UNDERCOVER**  
**STRATUM MAX**

**20% OFF!**



- Carbonite SpyderWeb base to actively flex under load
- ReActive Performance Plush foam for maximum conformity
- Immersion relief groove ensures maximum soft tissue relief

Part #	Rails	Color	Grams	Reg.	20% OFF
40-202-0852	Hollow Ti Alloy	Black	270	86.98	64.80

**TIOGA**  
**UNDERCOVER**  
**STRATUM MAX**

**20% OFF!**



- Carbonite SpyderWeb base to actively flex under load
- ReActive Performance Plush foam for maximum conformity
- Immersion relief groove ensures maximum soft tissue relief

Part #	Rails	Color	Grams	Reg.	20% OFF
40-202-0851	Hollow CrMo	Black	280	61.21	45.60

**TIOGA**  
**UNDERCOVER**  
**STRATUM MAX**

**20% OFF!**



- Carbonite SpyderWeb base to actively flex under load
- ReActive Performance Plush foam for maximum conformity
- Immersion relief groove ensures maximum soft tissue relief

Part #	Rails	Color	Grams	Reg.	20% OFF
40-202-0850	Steel	Black	325	48.32	36.00

**TIOGA**  
**UNDERCOVER HERS TI**

- Sleek profile and wide seating surface
- Less central curvature to minimize pressure on soft tissues
- Optimized for longer rides
- Bio X-Pad SL cushioning system



**CLOSEOUT!**

Part #	Model	Rails	Color	Grams	Reg.	SALE
40-202-0610	Undercover Hers	Titanium	Black	200	82.29	26.21

**TIOGA**  
**UNDERCOVER HERS CRMO**

- Sleek profile and wide seating surface
- Less central curvature to minimize pressure on soft tissues
- Optimized for longer rides
- Bio X-Pad ReActiv cushioning system



**CLOSEOUT!**

Part #	Model	Rails	Color	Grams	Reg.	SALE
40-202-0600	Undercover Hers	CroMoly	Black	240	59.08	19.12

## TIOGA CITY SLICKER

- Unique inverted tread for road use
- Low rolling resistance
- High Energy rubber

Part #	Model	Dia.	Width	Type	Compound	Bead	TPI	Color	Grams	Reg.	20%OFF
46-202-5260	City Slicker	26" / 559	1.95"	Tube Type	High Energy	Wire		Black	750	19.84	14.78
46-202-5500	City Slicker	700c	28mm	Tube Type	High Energy	Wire		Black	350	19.84	14.78
46-202-5510	City Slicker	700c	32mm	Tube Type	High Energy	Wire		Black	360	19.84	14.78



## TIOGA EDGE 22

- Front specific design with an open centerline and ramped intermediate knobs
- Two cornering edges instead of one
- Tracks straight but provides insane grip and predictability in turns
- Tubeless compatible casing

Part #	Model	Dia.	Width	Type	Compound	Bead	TPI	Color	Grams	Reg.	SALE
46-202-1300	Edge 22	27.5" / 584	2.50"	Tubeless Ready	Dual Compound	Folding		Black	930	51.87	14.57
46-202-1320	Edge 22	29" / 622	2.50"	Tubeless Ready	Dual Compound	Folding		Black	980	51.87	14.57



## TIOGA SPYDER STRATUM TI

- Comfortable DualTech Carbonite two-density body
- Upgraded with silicone pads
- Road/Mountain
- Flex limited to seating area; underside structural braces tuned for pedaling



Part #	Model	Rails	Color	Grams	Reg.	SALE
40-202-1620	Stratum Ti	Titanium	Black	180	81.40	26.21

## TIOGA SPYDER STRATUM

- Comfortable DualTech Carbonite two-density body
- Upgraded with silicone pads
- Road/Mountain
- Flex limited to seating area; underside structural braces tuned for pedaling



Part #	Model	Rails	Color	Grams	Reg.	SALE
40-202-1610	Spyder Stratum	CroMoly	Black	190	59.61	19.12

## TIOGA ADV SEAT BAG

- 5L Capacity
- PU coated 600D nylon
- Additional mesh pocket with zipper
- May be rolled up to adjust bag volume



Part #	Capacity	Color	Grams	P5
03-202-0040	5.0 L	Black	215	24.00

## TIOGA SPYDER OUTLAND TI

- A proprietary, dual-density impact resistant composite material
- Impact Resistant DualTech Carbonite Shell
- Removable silicone anti-slip pad
- Hollow Titanium Rails



Part #	Rails	Color	Grams	Reg.	20%OFF
40-202-3208	Hollow Ti Alloy	Black	175	86.98	64.80

## TIOGA SPYDER OUTLAND CRMO

- A proprietary, dual-density impact resistant composite material
- Impact Resistant DualTech Carbonite Shell
- Removable silicone anti-slip pad
- Hollow Chromoly Rails



Part #	Rails	Color	Grams	Reg.	20%OFF
40-202-3209	Hollow Crmo	Black	180	67.65	50.40

## TIOGA SEALED BMX BOTTOM BRACKET

- 1-Piece for American BB
- Sealed cartridge bearings
- Alloy cups



Part #	Model	TPI	P5
63-202-0500	Sealed BMX	24	49.10

**TOPEAK**

## ROAD MORPH w/GAUGE

- Folding foot support and flexible hose
- Easily convert frame pump into floor pump
- Padded locking T-handle
- Aluminum barrel
- PV/SV convertible
- Includes in-line gauge
- Pumps to 160 psi



Part #	Model	Material	Grams	P5
13-081-2410	Road Morph	Aluminum	220	27.20

**TOPEAK**

## MOUNTAIN MORPH

- Folding foot support and flexible hose
- Easily convert frame pump into floor pump
- Padded locking T-handle
- Aluminum barrel
- PV/SV convertible
- Easily pumps to 160 psi



Part #	Model	Material	Grams	P5
13-081-2300	MTN Morph	Aluminum	250	22.19

**TOPEAK**

## MINI MORPH \*Updated version 2025

- Folding T-Handle makes pumping easy and comfortable
- Fold-out food pad creates a stable floor pump like experience
- Flexible hose for ease of use
- Centerline mount bracket allows mounting with straps or bottle bosses



Part #	Model	Material	Grams	P5
13-081-2351	Mini Morph	Butted Aluminum	154	19.24

**TOPEAK**

## MTB TT TWIN TURBO

- Fills fat bike tires, higher pressure MTB tires and gravel bike tires
- TwinTurbo technology uses both strokes to deliver high pressure output
- Thumb lock lever ensures air-tight seal
- Integrated dust cap keeps pump head clean



Part #	Model	Color	PSI	P5
13-081-1270	Mountain TT Twin Turbo	Black	120	21.76

**TOPEAK**

## MINI MORPH

- The smallest Morph is still big on features
- Fold out foot pad for hassle-free inflation
- Efficient single action
- Inflates to 160 psi
- Includes T-handle for increased pumping power
- PV/SV convertible



Part #	Model	Material	Grams	P5
13-081-2350	Mini Morph	Aluminum	154	19.69

**TOPEAK**

## MINI DUAL DX

- Dual pumping action for twice as much air per stroke
- Smarthead automatically adjusts to fit Presta or Schrader valves
- Thumblock lever
- Padded Ergo handle
- Inflates to 120 psi
- Side mount bracket



Part #	Model	Grams	P5
13-081-1250	Mini Dual DX	150	15.18
13-081-1260	Mini Dual DXG w/gauge	170	17.72

**TOPEAK**

## MINI DUAL

- Dual pumping action for twice as much air per stroke
- Quickly converts between Presta or Schrader valves
- Thumblock lever
- Padded Elastomer Ergo handle
- Effortlessly inflates to 120 psi



Part #	Model	Material	Grams	P5
13-081-1140	Mini Dual	Aluminum	148	11.64

**TOPEAK**

## PEAK DX II

- Great for road or trail
- Single action
- Butted Aluminum barrel
- T-type handle
- PV/SV convertible SmartHead
- 9.8" length
- Pumps to 90 psi



Part #	Model	Color	Grams	P5
13-081-1570	Peak DX II	Silver	155	15.18



**TOPEAK**

## MTX BEAMRACK II - A TYPE \*Updated version 2025

- Aluminum rack with bolt mount for 25.4-31.8mm seat post
- fit 26"-29" MTB and 700C gravel bikes
- MTX QuickTrack / QuickTrack2.0 / MIK system trunk bags



Part #	Model	F/R	Color	Grams	P5
06-081-2151	A-Type	Rear	Black	722	37.98

**TOPEAK**

## EXPLORER DISC w/o SPRING Updated Version

- Lightweight tubular alloy
- General purpose 3-strut alloy carrier with integrated fender top
- 10mm 6061-T6 tubular aluminum
- Stainless steel hardware
- MTX QuickTrack to accept Topeak trunk bags
- This version has no integrated spring clamp
- Updated version work with MTX Quick Track System, 1.0 and 2.0



Part #	Model	Grams	P5
06-081-1841	Disc (no spring clamp)	620	29.36

**TOPEAK**

## EXPLORER Updated Version

- Lightweight tubular alloy
- General purpose 3-strut alloy carrier with integrated fender top
- 10mm 6061-T6 tubular aluminum
- Stainless steel hardware
- MTX QuickTrack to accept Topeak trunk bags
- Rear light mount
- Updated version works with MTX Quick Track System 1.0 and 2.0
- 55 lbs. weight limit



Part #	Model	Grams	P5
06-081-1831	Standard (no spring clamp)	625	26.84

**TOPEAK**

## EXPLORER Updated Version

- Lightweight tubular alloy
- General purpose 3-strut alloy carrier with integrated fender top
- 10mm 6061-T6 tubular aluminum
- Stainless steel hardware
- MTX QuickTrack to accept Topeak trunk bags
- Rear light mount
- Updated version works with MTX Quick Track System 1.0 and 2.0
- 55 lbs. weight limit



Part #	Model	Grams	P5
06-081-1801	Spring Clamp	800	29.36

**TOPEAK**

## BB HIDE'N TOOL

- Compact and portable chain tool
- 7 function folding tool CNC machined tool
- Tool slides into bottom bracket spindle for easy access
- Ring-pull knob with built-in magnets
- Aluminum 13spd chain tool



Part #	Model	Material	P5
16-081-4525	BB Hide'N Tool	CNC Machined	30.38

**TOPEAK**

## PLUG'N CHAIN TOOL 13S

- An easily accessible hidden compact chain tool kit
- Mounts in the end of a mountain bike handlebar
- CrMO steel chain tool is compatible with single and multi-speed chains
- Works with chains up to 13-Speed
- Includes SRAM Flattop and Campagnolo hollow pin chains



Part #	Model	Material	P5
16-081-4520	Plug 'N Chain Tool	CrMO Steel	24.30

**TOPEAK**

## PLUG'N TOOL MTB

- Two easily accessible hidden compact tool
- Kits housed in your handlebar ends
- 7 tool bit kit, 10mm Allen Bit, Angle adjustable bit holder, integrated
- compartment for 6 bits (3/4/5/6/T25/PH2)
- Tubeless tire repair kits, 3.5mm plug insertion tool, 3pcs repair plugs



Part #	Model	Material	P5
49-081-1300	Plug 'N Tool MTB	Hardened Steel	30.38

**TOPEAK**

## PLUG'N TOOL ROAD

- Two easily accessible hidden compact tool kits housed in your handlebar ends
- 4 tool bit kit, 10mm Allen Bit, Angle adjustable bit holder, integrated
- compartment for 3 bits (4/5/6)
- 1.5mm Plug insertion tool, 3 pcs repair plugs
- Includes rubber sleeve plugs for 18-20mm, 19.2-21.2mm



Part #	Model	Material	P5
49-081-1301	Plug 'N Tool Road	Hardened Steel	29.63



# ERGON

## BIKE ERGONOMICS



### GE1 EVO SLIM

- New Bold MTB-Colors
- Surface texture is more slip-proof and rubber compound is softer
- Supports the correct torso/forearm position during downhill riding
- Forged inner clamp and integrated grip end connected to the inner core
- Soft, damping grip edge your hand can grip right, at the outer edge
- Pressure is diminished from the sensitive ulnar nerve on outer hand
- Compatible with carbon handlebars



Part #	Model	Size	Color	P5
38-524-2180	GE1 Evo Slim	One Size	Black	19.45
38-524-2181	GE1 Evo Slim	One Size	Bright Blue	19.45
38-524-2182	GE1 Evo Slim	One Size	Red	19.45
38-524-2183	GE1 Evo Slim	One Size	Orange	19.45
38-524-2184	GE1 Evo Slim	One Size	Yellow	19.45



### GS1 EVO

- Aircraft Aluminum clamp
- Mountain bike, cross country and long-distance



Part #	Model	Size	Color	P5
38-524-2670	GS1	Small	Black	19.45
38-524-2671	GS1	Small	Moondust Grey	19.45
38-524-2672	GS1	Small	Nightride Blue	19.45
38-524-2673	GS1	Small	Chili Red	19.45
38-524-2674	GS1	Large	Black	19.45
38-524-2675	GS1	Large	Moondust Grey	19.45



### GP2

- Replaces the best selling GC2 grip
- New 2-finger GFK bar end with rubberized anti-slip lower texture
- Bar end and grip body can be independently adjusted



Part #	Model	Size	Color	P5
38-524-1220	GP2-S	Small	Black/Gray	27.79
38-524-1230	GP2-L	Large	Black/Gray	27.79



### GP3

- Features 3-finger bar end with anti-slip rubber inserts
- Bar end and grip body can be independently adjusted
- Carbon bar compatible



Part #	Model	Size	Color	P5
38-524-1420	GP3-S	Small	Black/Gray	33.36
38-524-1430	GP3-L	Large	Black/Gray	33.36
38-524-1450	GP3-L	GripShift	Black/Gray	33.36



### GC1 BIOKORK

- Grip for swept back bars
- Grip body made of 40% cork
- Clamp is pure aluminium and 100% recycled



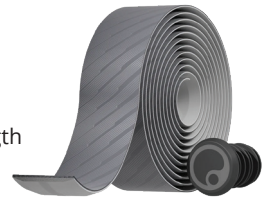
Part #	Model	Size	Color	P5
38-524-1120	GC1 BioKork	One Size	Cork	27.79

# BIKE ERGONOMICS



### BT ROAD TAPE

- Ergonomic handlebar tape for all drop bar disciplines
- 2mm thickness for road use, 2100 mm length
- Made of EVA foam which offers optional durability
- Reduces hand discomfort in all road cycling disciplines
- Supports increased vibration damping, anti-slip surface texture
- Built-in wrapping guide for thinner or thicker wrapping
- Wrap in two directions for increased grip or more freedom of movement

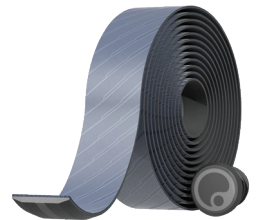


Part #	Model	Color	P5
37-524-1000	BT Road	Black	18.34
37-524-1001	BT Road	Moondust Grey	18.34
37-524-1002	BT Road	White Speed	21.12



### BT ALLROAD TAPE

- Ergonomic handlebar tape for all drop bar disciplines
- 2.5 mm thickness for road use, 2100 mm length
- Made of EVA foam which offers optional durability
- Reduces hand discomfort in all road cycling disciplines
- Supports increased vibration damping, anti-slip surface texture
- Built-in wrapping guide for thinner or thicker wrapping
- Wrap in two directions for increased grip or more freedom of movement



Part #	Model	Color	P5
37-524-1030	BT Allroad	Black	21.12
37-524-1031	BT Allroad	Space Blue	21.12
37-524-1032	BT Allroad	Merlot Red	21.12
37-524-1033	BT Allroad	Wilderness Green	21.12
37-524-1034	BT Allroad	White Speed	21.12



### PT PEDALS

- The ergonomic pedal for demanding touring riders
- Increased comfort, better power transmission and less discomfort
- over long distances and with everyday shoes
- Suitable for Touring, Fitness, e-Touring, and City



Part #	Model	Size	Fits	Color	P5
65-524-1000	PT Series	Small	Shoe size 42 and under	Black	27.79
65-524-1001	PT Series	Large	Shoe size 43 and over	Black	27.79



### REAR VIEW MIRROR - RM TOURING

- More safety and riding awareness due to wide viewing area
- Ergonomically optimal field of vision reduces head movement when viewing
- Folding mirror arm ideal for maneuvering or as contact protection
- Mirror surface made of robust safety glass



Part #	Color	P5
00-524-0000	Black	22.23



# ERGON

## BIKE ERGONOMICS



### SMC CORE MEN

- MTB Saddle featuring Ergon CORE 3D
- An addition to the SM series which feature Core and TwinShell technology
- CORE 3D design allows the saddle to follow pelvic movements
- Reduces pressure on the sit bones and genital areas
- CORE made of BASF Infinergy? (E-TPU/Closed Cell Particle Foam)



Part #	Model	Gender	Size	Color	P5
40-524-0700	SMC Core Men	Men	S/M	Black	90.00
40-524-0701	SMC Core Men	Men	M/L	Black	90.00



### ST CORE EVO MEN

- Gender-specific relief zones
- 3D damping adapts to pelvic motion
- MT!
- MT!



Part #	Model	Gender	Size	Color	P5
40-524-0670	ST Core EVO Men	Men	S/M	Black/Grey	90.00
40-524-0671	ST Core EVO Men	Men	M/L	Black/Grey	90.00



### SMC SPORT GEL MEN

- Orthopedic padding provides enhanced support and pressure distribution
- Contoured surface area helps prevent saddle discomfort
- The relief channel helps to avoid numbness
- Increased protection for soft-tissue areas
- Integrated Topeak QuickClick mount on all models of the SMC



Part #	Model	Gender	Size	Color	P5
40-524-0692	SMC Sport Gel Men	Men	S/M	Black	55.77



### ST GEL MEN

- An ergonomic touring saddle specifically designed for men
- Ergonomic comfort is experienced even over long distances
- Comfort enhancing Gel-Pads, no numbness
- Orthopedic-grade foam



Part #	Model	Gender	Size	Color	P5
40-524-0130	ST Gel Men	Men	S/M	Black	38.23
40-524-0132	ST Gel Men	Men	M/L	Black	38.23



### SM DOWNHILL BLACK

- The SM Downhill is designed to be minimalist and compact
- Features 360 degree edge padding
- Just the right amount of padding for short seat transfers
- One size fits all



Part #	Model	Gender	Size	Color	P5
40-524-0706	SM DOWNHILL	Unisex	MT!	Black	33.35

# BIKE ERGONOMICS



### SC CORE PRIME WOMEN

- Soft, orthopedic comfort foam covered with a heavy-duty microfibre surface
- The core supports the natural movement of the hips
- Core support dampens the effect of constant bumps
- Padding made of Orthopedic Comfort Foam
- CORE 3D made of Closed Cell Particle Foam (E-TPU)



Part #	Model	Gender	Size	Color	P5
40-524-0681	SC Core Women Prime	Women	M/L	Black	90.00
40-524-0683	SC Core Women Prime	Women	S/M	Black	90.00



### SMC CORE WOMEN

- Saddle adapts to the pelvis with every pedal stroke resulting for comfort
- The elastic saddle core supports natural pelvic movements
- CORE 3D construction with twin shell takes comfort to a whole new level
- A high-performance elastomer damper decouples the two saddle shells
- SMC Core features orthopedic comfort foam padding
- Gel pad inlays offer additional support



Part #	Model	Gender	Size	Color	P5
40-524-0702	SMC Core Women	Women	S/M	Black	90.00
40-524-0703	SMC Core Women	Women	M/L	Black	98.37



### SR SPORT GEL WOMEN

- Features cut out that supports and alleviates unnecessary pressures
- OrthoCell material helps you to achieve your best performance
- Orthopedic foam is ergonomic for road cycling and extremely durable



Part #	Model	Gender	Size	Color	P5
40-524-0632	SR Sport Gel Women	Women	S/M	Black	55.62
40-524-0633	SR Sport Gel Women	Women	M/L	Black	55.62



### SM DOWNHILL COMP

- Full control and freedom of movement
- Features 360 degree edge padding
- Just the right amount of padding for short seat transfers
- One size fits all



Part #	Model	Gender	Size	Color	P5
40-524-0704	SM DOWNHILL COMP	Unisex	MT!	Black	50.06

## MTX GOLD LABEL HD SHIMANO

- Built for heavy bikes, heavy riders and extreme terrain
- Compound offers incredible protection over heat-induced brake fade
- Maintain feeling and control at the lever all while maximizing power



Part #	Model	Qty.	Fits	P5
84-750-0800	GL111	Pair	DEORE 2-PISTON	23.41
Suggested retail 34.99				

## MTX GOLD LABEL HD SHIMANO

- Built for heavy bikes, heavy riders and extreme terrain
- Compound offers incredible protection over heat-induced brake fade
- Maintain feeling and control at the lever all while maximizing power



Part #	Model	Qty.	Fits	P5
84-750-0805	GL121	Pair	XT/XTR 2-PISTON	23.41
Suggested retail 34.99				

## MTX GOLD LABEL HD SHIMANO

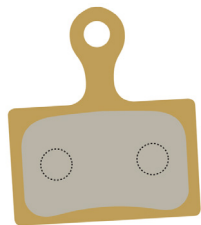
- Built for heavy bikes, heavy riders and extreme terrain
- Compound offers incredible protection over heat-induced brake fade
- Maintain feeling and control at the lever all while maximizing power



Part #	Model	Qty.	Fits	P5
84-750-0810	GL131	Pair	ALL SHIMANO & TRP 4-PISTON	23.41
Suggested retail 34.99				

## MTX GOLD LABEL HD SHIMANO

- Built for heavy bikes, heavy riders and extreme terrain
- Compound offers incredible protection over heat-induced brake fade
- Maintain feeling and control at the lever all while maximizing power



Part #	Model	Qty.	Fits	P5
84-750-0815	GL141	Pair	ROAD - GRX / ULTEGRA ALL	23.41
Suggested retail 34.99				

## MTX GOLD LABEL HD SRAM

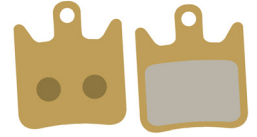
- Built for heavy bikes, heavy riders and extreme terrain
- Compound offers incredible protection over heat-induced brake fade
- Maintain feeling and control at the lever all while maximizing power



Part #	Model	Qty.	Fits	P5
84-750-0915	GL190	Pair	MAVEN	23.41
Suggested retail 34.99				

## MTX GOLD LABEL HD HOPE

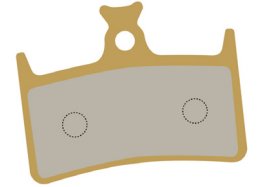
- Built for heavy bikes, heavy riders and extreme terrain
- Compound offers incredible protection over heat-induced brake fade
- Maintain feeling and control at the lever all while maximizing power



Part #	Model	Qty.	Fits	P5
84-750-1000	GL215	Pair	X2	23.41
Suggested retail 34.99				

## MTX GOLD LABEL HD HOPE

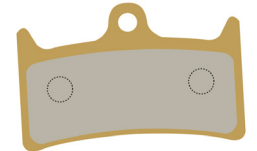
- Built for heavy bikes, heavy riders and extreme terrain
- Compound offers incredible protection over heat-induced brake fade
- Maintain feeling and control at the lever all while maximizing power



Part #	Model	Qty.	Fits	P5
84-750-1005	GL220	Pair	TECH 3 E4	23.41
Suggested retail 34.99				

## MTX GOLD LABEL HD HOPE

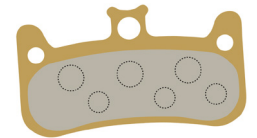
- Built for heavy bikes, heavy riders and extreme terrain
- Compound offers incredible protection over heat-induced brake fade
- Maintain feeling and control at the lever all while maximizing power



Part #	Model	Qty.	Fits	P5
84-750-1010	GL230	Pair	TECH 3 V4	23.41
Suggested retail 34.99				

## MTX GOLD LABEL HD FORMULA

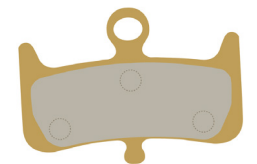
- Built for heavy bikes, heavy riders and extreme terrain
- Compound offers incredible protection over heat-induced brake fade
- Maintain feeling and control at the lever all while maximizing power



Part #	Model	Qty.	Fits	P5
84-750-1100	GL255	Pair	CURA 4	23.41
Suggested retail 34.99				

## MTX GOLD LABEL HD HAYES

- Built for heavy bikes, heavy riders and extreme terrain
- Compound offers incredible protection over heat-induced brake fade
- Maintain feeling and control at the lever all while maximizing power



Part #	Model	Qty.	Fits	P5
84-750-1200	GL260	Pair	DOMINION A4	23.41
Suggested retail 34.99				



## RED LABEL RACE SHIMANO

- MTX CeraEvo ceramic material provides the ultimate interface for your rotor
- Control your corners with the ability to precisely modulate your braking
- Produces next-to-zero noise output under any condition



Part #	Model	Qty.	Fits	P5
84-750-0100	RL111	Pair	Deore 2-Piston	23.41
Suggested retail 34.99				



## RED LABEL RACE SHIMANO

- MTX CeraEvo ceramic material provides the ultimate interface for your rotor
- Control your corners with the ability to precisely modulate your braking
- Produces next-to-zero noise output under any condition



Part #	Model	Qty.	Fits	P5
84-750-0105	RL121	Pair	XT/XTR 2-Piston	23.41
Suggested retail 34.99				



## RED LABEL RACE SHIMANO

- MTX CeraEvo ceramic material provides the ultimate interface for your rotor
- Control your corners with the ability to precisely modulate your braking
- Produces next-to-zero noise output under any condition



Part #	Model	Qty.	Fits	P5
84-750-0110	RL131	Pair	All 4-Piston	23.41
Suggested retail 34.99				



## RED LABEL RACE SHIMANO

- MTX CeraEvo ceramic material provides the ultimate interface for your rotor
- Control your corners with the ability to precisely modulate your braking
- Produces next-to-zero noise output under any condition



Part #	Model	Qty.	Fits	P5
84-750-0115	RL141	Pair	All Road	23.41
Suggested retail 34.99				



## RED LABEL RACE SRAM

- MTX CeraEvo ceramic material provides the ultimate interface for your rotor
- Control your corners with the ability to precisely modulate your braking
- Produces next-to-zero noise output under any condition



Part #	Model	Qty.	Fits	P5
84-750-0200	RL160	Pair	AXS/FORCE/LEVEL/RED	23.41
Suggested retail 34.99				



## RED LABEL RACE MAGURA

- MTX CeraEvo ceramic material provides the ultimate interface for your rotor
- Control your corners with the ability to precisely modulate your braking
- Produces next-to-zero noise output under any condition



Part #	Model	Qty.	Fits	P5
84-750-0300	RL195	Pair	MT2/4/6/8 2-PISTON	23.41
Suggested retail 34.99				



## RED LABEL RACE AVID

- MTX CeraEvo ceramic material provides the ultimate interface for your rotor
- Control your corners with the ability to precisely modulate your braking
- Produces next-to-zero noise output under any condition

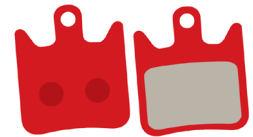


Part #	Model	Qty.	Fits	P5
84-750-0400	RL210	Pair	AVID BB7/JUICY	23.41
Suggested retail 34.99				



## RED LABEL RACE HOPE

- MTX CeraEvo ceramic material provides the ultimate interface for your rotor
- Control your corners with the ability to precisely modulate your braking
- Produces next-to-zero noise output under any condition



Part #	Model	Qty.	Fits	P5
84-750-0500	RL215	Pair	Hope X2	23.41
Suggested retail 34.99				



## RED LABEL RACE HOPE

- MTX CeraEvo ceramic material provides the ultimate interface for your rotor
- Control your corners with the ability to precisely modulate your braking
- Produces next-to-zero noise output under any condition



Part #	Model	Qty.	Fits	P5
84-750-0505	RL220	Pair	Hope TECH 3 E4	23.41
Suggested retail 34.99				



## RED LABEL RACE HOPE

- MTX CeraEvo ceramic material provides the ultimate interface for your rotor
- Control your corners with the ability to precisely modulate your braking
- Produces next-to-zero noise output under any condition



Part #	Model	Qty.	Fits	P5
84-750-0510	RL230	Pair	Hope TECH 3 V4	23.41
Suggested retail 34.99				



**OBSERVE. DESIGN. INNOVATE.**

**ODI VANQUISH D30 LOCK-ON**

- Multi-layered grip reduces shock and vibration
- Features a unique variation of the time-tested waffle
- The Vanquish grip features a small inside flange
- Double-reinforced ends for added protection for your grips and bars



Part #	Model	Color	Clamps	P5
38-318-5000	Vanquish Lock-On	Black	Black	23.33
38-318-5001	Vanquish Lock-On	Orange	Black	23.33
38-318-5002	Vanquish Lock-On	Graphite	Gray	23.33

**ODI REFLEX LOCK-ON**

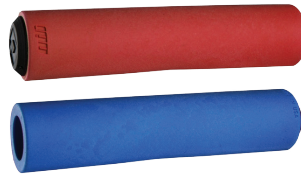
- Medium/Large profile / Medium Compound
- V2.1 lock-on single clamp system provides more useable grip space
- Reinforced durable ends
- Soft flexible ribs at thumb provide impact damping



Part #	Model	Color	Clamps	P5
38-318-6101	Reflex Lock-On	Black	Black	17.07
38-318-6102	Reflex Lock-On	Gray	Black	17.07
38-318-6103	Reflex Lock-On	White/Green	Black	17.07

**ODI F-1 FLOAT**

- Medium diameter (31.5mm)
- Reinforced inner layer for added durability
- Micro-Textured surface pattern improves tackiness and control
- Smooth Profile for a consistent feel



Part #	Model	Color	Length	P5
38-318-6800	F-1 Float	Black	130mm	11.21
38-318-6810	F-1 Float	Green	130mm	11.21
38-318-6820	F-1 Float	Red	130mm	11.21
38-318-6830	F-1 Float	Blue	130mm	11.21

**ODI RUFFIAN LOCK-ON**

- The Gold Standard in grips for over 10 years
- Epic knurled pattern for maximum traction and vibration dampening
- Ultra narrow racing profile
- Lock-On grip system, 100 percent slip free performance
- Includes new snap cap end plugs



Part #	Model	Color	Clamps	Length	P5
38-318-5930	Ruffian	Black	Black	130mm	18.29

**ODI VANS V2.1 LOCK-ON**

- Two California Originals have teamed up to bring you an updated version of o
- Mini flange protects hands without interfering with handlebar components
- Soft end that offers improved comfort on the out end of the grip
- Slim 31mm outside diameter



Part #	Model	Color	Clamps	P5
38-318-5511	Vans V2.1 Lock-On	Black	Black	17.27
38-318-5521	Vans V2.1 Lock-On	Gum	Black Checker	17.27
38-318-5531	Vans V2.1 Lock-On	Graphite	Gray	17.27
38-318-5544	Vans V2.1 Lock-On	Purple	Oil Slick	18.60
38-318-5551	Vans V2.1 Lock-On	Light Blue	Blue	17.27
38-318-5561	Vans V2.1 Lock-On	Red	Red	17.27

**ODI CULT VANS w/FLANGE**

- VANS waffle sole pattern
- ODI's proprietary grip compounds
- Exceptional control in all conditions



Part #	Model	Color	Length	P5
38-318-5400	Cult Vans	Black	150mm	6.87
38-318-5410	Cult Vans	Gum Rubber	150mm	6.87

**ODI CULT VANS**

- VANS waffle sole pattern
- ODI's proprietary grip compounds
- Exceptional control in all conditions



Part #	Model	Color	Length	P5
38-318-5420	Cult Vans	Black	150mm	6.87
38-318-5430	Cult Vans	Bright Blue	150mm	6.87
38-318-5450	Cult Vans	Gum Rubber	150mm	6.87
38-318-5460	Cult Vans	Bright Red	150mm	6.87

**ODI CF LOCK-ON**

- Precision Engraved Pattern For Optimal Balance Between Feedback and Control
- Inverted Finger Cutouts Providing Extra Grip Where its Needed
- Louvered Inside Palm Section for Added Cushion on Inside of Palm
- Carbon Fiber Reinforced Ends Help Prevent Grip BlowoutCarbon Fiber Reinforce



Part #	Model	Color	Clamps	P5
38-318-3431	CF Lock-On	Pearl Black/Graphite	Matte Black	22.14
38-318-3432	CF Lock-On	Pearl Black/Red	Matte Red	22.14
38-318-3433	CF Lock-On	Lynx Gray	Orange	22.14
38-318-3434	CF Lock-On	Sapphire/Blue	Matte Blue	22.14
38-318-3437	CF Lock-On	Purple	Purple	22.14



**OBSERVE. DESIGN. INNOVATE.**

**SOFT BMX LONGNECK NO FLANGE**

- Classic mushroom style collapsible rib pattern
- Constructed of ODI soft grip compound for comfort and durability
- Open ends with Thug Plug end plugs included



Part #	Model	Color	Length	P5
38-318-1040	Flangeless Longneck	Black	135mm	7.33
38-318-1050	Flangeless Longneck	Bright Blue	135mm	7.33
38-318-1240	Flangeless Longneck	Aqua	135mm	7.33
38-318-1080	Flangeless Longneck	Purple	135mm	7.33
38-318-1080	Flangeless Longneck	Graphite	160mm	7.53
38-318-1060	Flangeless Longneck	Bright Red	135mm	7.33
38-318-1270	Flangeless Longneck	Fire Red	135mm	7.33
38-318-1070	Flangeless Longneck	Lime Green	135mm	7.33

**LONGNECK ST**

- Classic mushroom style collapsible rib pattern
- Constructed of ODI proprietary grip compound for comfort and durability
- Open ends with Thug Plug end plugs included



Part #	Model	Color	Length	P5
38-318-1200	Longneck ST	Black	143mm	7.33
38-318-1130	Longneck ST	Bright Red	143mm	7.33
38-318-1140	Longneck ST	Purple	143mm	7.33
38-318-1150	Longneck ST	Pink	143mm	7.33
38-318-1170	Longneck ST	Green	143mm	7.33
38-318-1180	Longneck ST	Blue	143mm	7.33
38-318-1190	Longneck ST	Aqua	143mm	7.33

**LONGNECK SLX**

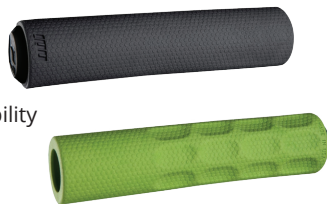
- Classic mushroom style collapsible rib pattern
- Constructed of our proprietary grip SOFT compound for added comfort!
- Increasingly popular with top athletes around the world
- Open ends with Two Color Push In Plugs end plugs included



Part #	Model	Color	Length	P5
38-318-1275	Longneck SLX	Black	160mm	7.53

**F-1 VAPOR**

- Medium diameter (31.5mm)
- Reinforced inner layer for added durability
- Added surface pattern provides improved grip in all conditions
- Ergonomic finger cutouts for a better gripping surface and improved control



Part #	Model	Color	Clamps	P5
38-318-6840	F-1 Vapor	Black	130mm	11.21
38-318-6850	F-1 Vapor	Green	130mm	11.21
38-318-6860	F-1 Vapor	Red	130mm	11.21
38-318-6870	F-1 Vapor	Blue	130mm	11.21

**AG-2 V2.1 LOCK-ON**

- New larger diameter, larger diameter than the original AG1 grip
- 30.5mm with offset padding towards the rider for improved comfort
- Soft Pro compound provides excellent shock absorption
- Redesigned surface pattern for improved traction and vibration dampening



Part #	Model	Color	Clamps	P5
38-318-3300	AG-2	Black/Graphite	Black	19.16
38-318-3310	AG-2	Black/Blue	Black	19.16
38-318-3340	AG-2	Red/Fire Red	Red	19.16
38-318-3350	AG-2	Bright Blue/Light Blue	Blue	19.16

**ELITE FLOW V2.1 LOCK-ON**

- Offset grip design provides padding where it is needed most
- Half-Waffle pattern for added control
- Single clamp Version 2.1 Lock-On System
- Soft pro compound for excellent shock absorption
- Reinforced ends for added durability



Part #	Model	Color	Clamps	P5
38-318-3360	Elite Flow	Graphite	Black	16.71
38-318-3390	Elite Flow	Light Blue	Blue	16.71
38-318-3510	Elite Flow	Black	Black	16.71
38-318-3562	Elite Flow	Mint Green	Black	16.71

**ELITE PRO V2.1 LOCK-ON**

- Ergonomic design conforms to riders hand without feeling bulky
- Half-Waffle pattern on the front of the grip provides extra control
- Single clamp Version 2.1 Lock-On System
- Variable knurl pattern alternates from smooth to sharp texture
- Reinforced ends for added durability



Part #	Model	Color	Clamps	P5
38-318-3570	Elite Pro	Black	Black	16.71
38-318-3580	Elite Pro	Black/Red	Black	16.71
38-318-3590	Elite Pro	Black/Gray	Black	16.71
38-318-3592	Elite Pro	Army Green	Black	16.71
38-318-3593	Elite Pro	Navy Blue	Blue	16.71

**TINKER JUAREZ DREAD LOCK V2.1 LOCK-ON**

- Offset Grip design provides more padding on the palm side of grip
- A.I.R.E. Compound for reduced weight and improved vibration dampening
- Contoured surface for improved comfort on longer rides
- Soft TPE Ends offer improved comfort and grip protection



Part #	Model	Color	Clamps	P5
38-318-6980	Tinker Juarez Dread Lock V2.1	Black	Black	18.34
38-318-6981	Tinker Juarez Dread Lock V2.1	Graphite	Black	18.34
38-318-6984	Tinker Juarez Dread Lock V2.1	Blue	Blue	18.34



# NEW HALO WAX & WET FROM FINISH LINE!

## FINISH LINE

### HALO LUBRICANT

- Highly Refined Paraffin creates a robust, dry-to-the-touch coating
- Repels water, sheds friction-causing abrasive contaminants
- Ceramic boron nitride forms a protective non-stick coating
- HALO lubricants are applied with a new patent pending Smart Luber



Part #	Model	Qty.	P5
19-358-1740	Halo Lubricant Wax	10 bottles	157.53

## FINISH LINE

### HALO LUBRICANT

- Minimizes drivetrain noise, dramatically reduces friction
- Repels water, and maintains viscosity in extreme temperatures
- Ceramic boron nitride forms a protective non-stick coating
- HALO lubricants are applied with a new patent pending Smart Luber



Part #	Model	Qty.	P5
19-358-1750	Halo Lubricant Wet	10 bottles	157.53

## FINISH LINE

### HALO LUBRICANT

- Package includes both Wax and Wet Halo Lubricant formulas
- Repels water, sheds friction-causing abrasive contaminants
- Ceramic boron nitride forms a protective non-stick coating
- HALO lubricants are applied with a new patent pending Smart Luber



Part #	Model	Qty.	P5
19-358-1760	Halo Lubricant Wax+Wet	5 bottles	157.53

## FINISH LINE

### HALO LUBRICANT

- Highly Refined Paraffin creates a robust, dry-to-the-touch coating
- Repels water, sheds friction-causing abrasive contaminants
- Virtually eliminates chain stains
- Delivers an unrivaled level of reduced drivetrain friction



Part #	Model	Qty.	P5
19-358-1730	Halo Lubricant Wax	1	21.00

## FINISH LINE

### WET LUBE

- Extreme Pressure Additives - Anti-Wear Agents & Friction Modifiers
- Wet Weather formulation - Rust Inhibitors & Water Repelling Polymers Added
- Race-proven performance through 100-plus mile rides.



Part #	Size	Type	Case	P5
19-358-1520	2 oz.	Drip Bottle	12	3.51
19-358-1540	4 oz.	Drip Bottle	12	5.48
19-358-1550	8 oz.	Drip Bottle	8	8.77
19-358-1580	8 oz.	Aerosol Can	6	6.84
19-358-1585	32 oz.	Bottle	1	26.31
19-358-1585	1 gal.	Bottle	1	74.54

## FINISH LINE

### DRY LUBE with Ceramic Boron Nitrite

- Delivers a low coefficient of friction
- Long re-lubrication intervals
- Dry Lube is recommended for dry, dirty, dusty environments
- Holds up well in moderately wet conditions
- Can also be used on derailleurs, shifters, cables, and brake pivot points
- Provides optimum drivetrain efficiency
- Finish Line's most popular and versatile lubricant



Part #	Size	Type	Case	P5
19-358-1021	2 oz.	Drip Bottle	12	3.51
19-358-1041	4 oz.	Drip Bottle	12	5.48
19-358-1051	8 oz.	Drip Bottle	8	8.77
19-358-1071	8 oz.	Aerosol Can	6	6.84

## FINISH LINE

### PEDAL & CLEAT LUBRICANT w/Ceramic Boron Nitrite

- 100 percent dry-to-the-touch micro-thin coating
- No oily, greasy film
- Formulated with Teflon fluoropolymer
- Factory approved by Speedplay



Part #	Size	Type	Case	P5
19-358-0401	5 oz.	Aerosol Can	6	5.87

## FINISH LINE

### PREMIUM GREASE w/Ceramic Boron Nitrite

- Functional thickener totally prevents rust and corrosion
- Polymers prevents washout and water emulsification
- Withstands higher pressures without shearing
- Tested, approved, and used by leading bike and bearing manufacturers



Part #	Size	Case	P5
19-358-2031	3.5 oz.	12	5.29
19-358-2161	16 oz.	12	14.54





# BICYCLE LUBRICANTS AND CARE PRODUCTS

## FINISH LINE

### ECOTECH DEGREASER

- Strong enough for the grimeiest metal parts
- Safe on rubber o-rings and seals, urethane elastomers, painted surfaces etc.
- Chains and gears are cleaned more quickly, usually without using water
- Biodegrades rapidly when in the environment



Part #	Size	Case	P5
19-358-5440	12 oz.	6	6.59
19-358-5490	20 oz.	6	10.50
19-358-5520	1 gal.	4	57.90

## FINISH LINE

### SPEED BICYCLE CHAIN DEGREASER

- A super duty cleaner
- Literally melts the grime away
- Strips the ugliest stuff, like brake rotor grime-right off
- Dries quickly and completely
- Leaves a residue free dry surface



Part #	Size	Case	P5
19-358-6860	18 oz.	6	7.68

## FINISH LINE

### e-BIKE CLEANER

- Meets eBike specifications
- Spray, wipe & clean
- Works on motor & battery casing, contacts & pins, frame, wheels, saddles
- Clinging foam makes it easy to spot clean



Part #	Size	Type	Case	P5
19-358-1620	14 oz.	Aerosol Can	12	5.29

## FINISH LINE

### GRUNGE BRUSH

- Super durable and breaks-up grunge and grime
- The u-shaped end cleans chains and chainrings
- The brush cleans derailleurs, around dropouts, between B.B. and chainrings



Part #	Model	Case	P5
16-358-6300	Grunge Brush	6	7.89

## FINISH LINE

### MAX SUSPENSION SPRAY

- Eliminates stiction and quiets noisy forks
- Noticeably improves fork travel and rebound
- Condition and protect rubber seals and O-rings
- Improves the surface slip of coated stanchions



Part #	Size	Type	Case	P5
19-358-0660	9 oz.	Aerosol Can	6	5.97

## FINISH LINE

### SHOCK OIL

- Semi-Synthetic formula
- Works with all fork seals
- Available in 4 weights
- Compatible with all major shock manufacturers



Part #	Weight	Size	Case	P5
19-358-5310	5wt		6	13.70
19-358-5320	7.5wt		6	13.70
19-358-5330	10wt		6	13.70
19-358-5340	15wt		6	13.70

## FINISH LINE

### DISC BRAKE CLEANER

- Acetone-free formula, zero residue after application
- Decontaminates braking surfaces by flushing out dirt and oil residue
- Displaces any moisture built up on the pad or rotor
- Safe to use around paint, carbon fiber, and plastic parts
- Perfect for home use for preventative maintenance on bicycle disc brakes



Part #	Size	Case	P5
19-358-7200	10 oz.	6	4.82

## FINISH LINE

### D.O.T. BRAKE FLUID

- D.O.T. formula compatible with all D.O.T. systems 3.0, 4.0 & 5.1
- 4 ounce bottle



Part #	Size	Case	P5
19-358-7310	4 oz.	6	5.79

## FINISH LINE

### MINERAL OIL BRAKE FLUID

- Specifically engineered for use in bicycle hydraulic disc brakes
- Maximum fluid life and braking performance, even at low temperatures
- Prevents foaming and overheating



Part #	Size	Case	P5
19-358-7210	4 oz.	6	5.79
19-358-7211	16 oz.	6	10.53
19-358-7212	32 oz.	6	16.47



# MADE FOR RIDERS, BY RIDERS

## REGULAR SEALANT

- Formulated to maximize longevity allowing longer between top-offs
- Proven ability to last up to three times longer
- Seal large punctures up to 1/4" and perform under varying temperatures
- Compatible with most bike tire systems and is eco-friendly



Part #	Size	Includes	Qty.	P5
48-594-0500	4 oz.	Injector System	1	6.17
48-594-0550	4 oz.		1	4.57
48-594-0600	8 oz.	Injector System	1	9.15
48-594-0650	8 oz.		1	8.01
48-594-0700	16 oz.		1	11.46
48-594-0750	32 oz.		1	21.26

## ENDURANCE SEALANT

- Formulated to maximize longevity allowing longer between top-offs
- Proven ability to last up to three times longer
- Seal large punctures up to 1/4" and perform under varying temperatures
- Compatible with most bike tire systems and is eco-friendly



Part #	Size	Includes	Qty.	P5
48-594-2000	4 oz.	Injector System	1	6.76
48-594-2050	4 oz.		1	5.14
48-594-2100	8 oz.	Injector System	1	10.11
48-594-2150	8 oz.		1	8.58
48-594-2200	16 oz.		1	12.03
48-594-2250	32 oz.		1	22.22

## SUBZERO SEALANT

- Formulated to maximize extreme frigid temperature



Part #	Size	Qty.	P5
48-594-1000	8 oz.	1	8.86
48-594-1050	16 oz.	1	12.59
48-594-1100	32 oz.	1	22.90

## VERSAVALVE BLANK VALVE STEMS

- VersaValve replacement stems



Part #	Length	Color	Qty.	P5
48-594-3530	32mm	Black	10	44.65
48-594-3540	48mm	Black	10	45.80
48-594-3550	60mm	Black	4	21.76
48-594-3560	80mm	Black	4	22.90

## ROAD TUBE KIT

- A practical, inexpensive, "tubed" solution for flat prevention
- Includes two 48 mm 700c x 18-23 mm road tubes w/removable valve cores
- Orange Seal injection system
- RVC tool
- One 4 ounce bottle of sealant



Part #	Wheel Dia.	Width	P5
48-594-5300	700c	18-23mm	20.04

## TUBELESS KIT

- Everything needed to convert wheels to a tubeless system
- Kit includes rim tape
- Two 48 mm removable valve core (RVC) valve stems
- RVC tool
- Twist-lock injector
- One 8 ounce bottle of Orange Seal sealant



Part #	Width	Includes	P5
48-594-5250	18mm	Sealant, Tape, 2 Valves, Tool	35.21

## FAT TIRE TUBELESS KIT

- Everything needed to convert wheels to a tubeless system
- Kit includes rim tape
- Two 32 mm removable valve core (RVC) valve stems
- One 8 ounce bottle of Orange Seal sealant



Part #	Width	Includes	P5
48-594-5100	45mm	Regular Sealant	29.76
48-594-5150	45mm	Subzero Sealant	29.76

## TUBELESS RIM TAPE

- Greater flexibility helps fit different rim types and shapes



Part #	Width	Length	Qty.	P5
48-594-4000	18mm	12 yards	1	7.45
48-594-4100	24mm	12 yards	1	7.45
48-594-4200	45mm	12 yards	1	14.31
48-594-4050	18mm	60 yards	1	22.90
48-594-4150	NM!	NM!	NM!	NM!
48-594-4250	45mm	60 yards	1	38.36

## REMOVABLE VALVE CORE TOOLS

- 4 different tools in set



Part #	Type	Qty.	P5
48-594-3580	Set of 4		2.85

## RYNOPOWER

### PROTEIN PREMIUM WHEY POWDER

- Allergen-free, gluten-free, & absolutely delicious
- Perfect for athletes looking to treat their bodies to the best
- No additives, no fillers, and no oils
- Protein powder is sweetened with natural organic cane juice & stevia



Part #	Flavor	Qty.	P5
25-223-0220	Chocolate	12/POP box	21.58
25-223-0221	Vanilla	12/POP box	21.58
25-223-0222	Strawberry	12/POP box	21.58

Suggested retail 34.95

25-223-0210	Chocolate	20 Servings	33.93
25-223-0211	Vanilla	20 Servings	33.93
25-223-0212	Strawberry	20 Servings	33.93

Suggested retail 54.95

## RYNOPOWER

### ENDURANCE PLUS POWER PACKAGE

- Includes:
- PROTEIN Premium Whey Powder
- 20 Servings (2 LBS)
- High-quality protein powder helps rebuild muscles



FREE SHIPPING AVAILABLE - This Drop Shipped item qualifies for PRIME

Part #	Flavor	Qty.	P5
25-223-0005	Chocolate/Fruit Punch	3 Products	89.51
25-223-0006	Chocolate/Lemon Lime	3 Products	89.51
25-223-0007	Vanilla/Fruit Punch	3 Products	89.51
25-223-0008	Vanilla/Lemon Lime	3 Products	89.51

Suggested retail 144.95

## RYNOPOWER

### BODY BUILDER PACKAGE

- Combination of three of RynoPower's most popular supplements
- Includes:
- PROTEIN Premium Whey Powder
- 20 Servings (2 LBS)



FREE SHIPPING AVAILABLE - This Drop Shipped item qualifies for PRIME

Part #	Flavor	Qty.	P5
25-223-0010	Vanilla	3 Products	88.27
25-223-0011	Chocolate	3 Products	88.27

Suggested retail 142.95

## RYNOPOWER

### GOLD MEDAL PACKAGE

- Includes:
- PROTEIN Premium Whey Powder
- 20 Servings (2 LBS)
- High-quality protein powder helps rebuild muscles



FREE SHIPPING AVAILABLE - This Drop Shipped item qualifies for PRIME

Part #	Flavor	Qty.	P5
25-223-0015	Chocolate	7 Products	145.08
25-223-0016	Vanilla	7 Products	145.08

Suggested retail 234.95

## RYNOPOWER

### MANA GEL

- 100% Non-GMO ingredients
- Organic Evaporated Cane Juice, Natural Flavor, Himalayan Pink Salt
- Magnesium, Potassium, Calcium and Beta Carotene
- 70 calories per gel
- Only 5g of organic sugar



Part #	Flavor	Qty.	P5
25-223-1000	Mixed Berries	12/POP box	15.41
25-223-1001	Lemon Meringue	12/POP box	15.41
25-223-1002	Salted Caramel	12/POP box	15.41

Suggested retail 24.95

## RYNOPOWER

### MANA PROTEIN BAR

- Incredible superfoods bar that provides healthy fats
- All the fuel & none of the weigh-down
- 190 calories per bar
- 10g of high-quality plant protein
- Only 6g of organic sugar



Part #	Flavor	Qty.	P5
25-223-0400	Chocolate Peanut Butter	12/POP box	21.58
25-223-0401	Strawberry Acai	12/POP box	21.58

Suggested retail 34.95

## RYNOPOWER

### BLENDER BOTTLE

- Patented BlenderBall wire whisk mixes even the thickest protein shake
- Perfect in the kitchen, at the office, at the gym, travel, or on the go
- Now you can mix it smooth, anytime, anywhere



Part #	Capacity	Color	P5
04-223-0001	28 fl. oz.	Clear	8.00

Suggested retail 12.95

## RYNOPOWER

### GLADIATOR DRINK MIX

- Features: natural caffeine & guarana seed extract
- Provides explosive, smooth energy to get started & keep going
- Perfect for endurance activities
- Sweetened with plant-derived Stevia



Part #	Flavor	Qty.	P5
25-223-0300	Strawberry Lemonade	30 Servings	23.44

Suggested retail 37.95

## RYNOPOWER

### ELECTROLYTES SUPPLEMENT

- 50 servings (100 capsules)
- No artificial sweeteners, coloring, or flavors
- Made with all natural veggie capsules



Part #	Qty.	P5
25-223-0090	100 Capsules	17.88

Suggested retail 28.95

**Park Tool**

## ATD-1.2 ADJUSTABLE TORQUE DRIVER

- Retailers may not sell on Amazon unless authorized in writing by Park Tool
- Adjustable to 4, 4.5, 5, 5.5 or 6 Nm
- 1/4" hex drive
- Includes 3, 4, 5 mm and T25 bits stored in the handle



Part #	Model	P5
16-004-6490	ATD-1.2	41.11

**Park Tool**

## TW-5.2 RATCHETING CLICK-TYPE TORQUE WRENCH

- Retailers may not sell on Amazon unless authorized in writing by Park Tool
- High quality, ratcheting, click type torque wrench
- 2-14 Newton meter range (18-124 Inch Pounds)
- Adjustable in 0.4 Nm increments
- Ratcheting 3/8" drive
- Reads and registers for both left hand and right hand threading
- Dial-adjust system allows desired torque setting to be preset
- Conversion scale on tool body



Part #	Model	Description	Length	P5
16-004-6670	TW-5.2	PARK TW-5.2 TORQUE 3/8" WRNH	9.0"	56.74

**Park Tool**

## TM-1 SPOKE TENSION METER

- Retailers may not sell on Amazon unless authorized in writing by Park Tool
- Accurately measures the absolute tension of each spoke in a wheel
- Also measures the relative tension between all spokes in a wheel



Part #	Model	P5
16-003-0010	TM-1	56.00

**Park Tool**

## JH-3 WALL-MOUNTED SOCKET/BIT/TORQ TOOL ORGANIZER

- Retailers may not sell on Amazon unless authorized in writing by Park Tool
- Keeps bits, sockets and other tools well organized and within reach
- Three rows of moveable 3/8" drive bit holders, holds up to 45 tools
- Precision-cut openings along the back allow for convenient storage
- Holds Torque wrenches, drivers, and ratchet handles
- Integrated mounting holes allow for straightforward installation



Part #	Model	P5
16-005-1599	JH-3 Wall Mounted Organizer	22.20

**Park Tool**

## PW-5 HOME MECHANIC PEDAL WRENCH

- Retailers may not sell on Amazon unless authorized in writing by Park Tool
- 15 mm wrench opening



Part #	Model	P5
16-003-8960	PW-5	11.81

**Park Tool**

## DP-2 THREADED DUMMY PEDAL

- Retailers may not sell on Amazon unless authorized in writing by Park Tool
- For easy bike assembly
- Threaded for secure attachment



Part #	Model	P5
16-003-8450	DP-2	7.39

**Park Tool**

## BBT-59.3 BOTTOM BRACKET TOOL - 16 Notch

- Retailers may not sell on Amazon unless authorized in writing by Park Tool
- Fits 16-notch threaded bottom brackets
- Compatible with Ultegra BBR60 and Deore XT MT-800 bottom brackets
- 3/8" drive fitting
- Manufactured in-house by Park Tool
- Anodized for easy identification



Part #	Model	Fits	P5
16-003-2291	BBT-59.3		12.51

**Park Tool**

## BBT-69.4 BOTTOM BRACKET TOOL

- Retailers may not sell on Amazon unless authorized in writing by Park Tool
- Manufactured in-house by Park Tool
- Fits 16-notch tool fittings
- Features a ratchet/torque wrench-compatible 3/8" drive
- Compatible with the Park Tool BBT-RS (sold separately)



Part #	Model	P5
16-003-2312	BBT-69.4	13.75

**Park Tool**

## LRT-3 LOCKRING TOOL

- Retailers may not sell on Amazon unless authorized in writing by Park Tool
- Fits chaining of Specialized, Cannondale and FSA
- For lockrings with 47-48mm outside diameter and 4 or 8 notches
- Fits both 4 notch (FSA and Cannondale) and 8 notch (Specialized) locking
- 36mm hex drive to be used with Park Tool TWB-36 Crow Foot and



Part #	Model	P5
16-003-2352	LRT-3	13.88

## Park Tool

### SG-8 CARBON SAW GUIDE

- Retailers may not sell on Amazon unless authorized in writing by Park Tool
- Specifically designed to accommodate wider, carbon specific cutting blades
- Ensures straight, clean cut on 1", 1-1/8", and 1-1/4" threadless forks
- Also works cutting carbon handlebars and other round tubes from 22 - 33 mm
- Non-scratching composite body, steel threads and a steel reinforcing plate



Part #	Model	P5
16-004-4320	SG-8	35.13

## Park Tool

### CRC-15 CROWN RACE CUTTER ADAPTER

- Retailers may not sell on Amazon unless authorized in writing by Park Tool
- Machines 39.8 mm crown race seats (1.5" standard)
- For tapered forks with 1-1/8" steer tubes



Part #	Model	P5
16-004-3790	CRC-15	171.27

## Park Tool

### BBT-30.4 BOTTOM BRACKET TOOL

- Retailers may not sell on Amazon unless authorized in writing by Park Tool
- Bushing set used in conjunction with a head cup press (HHP-2 or HHP-3)
- Precisely press Bottom Bracket bearing into shell
- The included BB30 bearing remover easily pushes out bearings



Part #	Model	P5
16-003-2250	BBT-30.4	28.43

## Park Tool

### CCP-22 CRANK PULLER

- Retailers may not sell on Amazon unless authorized in writing by Park Tool
- Fits all cranks using 22 mm x 1 threads and square tapered B.B. spindles
- Also fits Power Spline cranks from SRAM using the 8 mm thread bolt
- Strong rotating tip system ensures smooth operation and long life



Part #	Model	P5
16-003-3200	CCP-22	9.41

## Park Tool

### BBT-9 BOTTOM BRACKET WRENCH

- Retailers may not sell on Amazon unless authorized in writing by Park Tool
- Fits 16-notch 44mm OD cups
- Also works on 16-notch rotor disc lockrings
- Center handle section dipped in vinyl for comfort



Part #	Model	P5
16-003-2120	BBT-18	18.25

## Park Tool

### SDS-1 SINGLE-SIDE SHOP SERVICE DEPT. SIGN

- Retailers may not sell on Amazon unless authorized in writing by Park Tool
- A single-sided configuration shop sign
- Made of aluminum and embossed with the "Service Department" label



Part #	Model	P5
87-003-0120	SDS-1	24.36

## Park Tool

### SDS-2 DOUBLE-SIDE SHOP SERVICE DEPT. SIGN

- Retailers may not sell on Amazon unless authorized in writing by Park Tool
- A double-sided configuration shop sign
- Made of aluminum and embossed with the "Service Department" label



Part #	Model	P5
87-003-0130	SDS-2	39.04

## Park Tool

### BO-2 BOTTLE OPENER

- Retailers may not sell on Amazon unless authorized in writing by Park Tool
- Ergonomically designed, engineered and built to provide tremendous leverage
- Makes quick work of any bottle cap



Part #	Model	P5
87-003-0000	BO-2	4.49

## Park Tool

### BO-3 KEYCHAIN BOTTLE OPENER

- Retailers may not sell on Amazon unless authorized in writing by Park Tool



Part #	Model	P5
87-003-0030	BO-3	4.10

## Park Tool

### SPK-1 SPORK

- Retailers may not sell on Amazon unless authorized in writing by Park Tool
- It's a spoon, it's a fork, it's a take along
- Made of 316 food grade stainless steel



Part #	Model	P5
87-003-0040	SPK-1	5.07

## Panaracer

### PASELA ProTite

- Excellent urban or touring tire
- ProTite Belt puncture protection technology
- 400D Lite Extra Cord increases side-cut resistance and improves the rigidity

Part #	Model	Dia.	Width	Type	Compound	Bead	TPI	Sidewall	Grams	P5
46-204-8400	Pasela ProTite	27"	1-1/8"	Tube Type	Single Compound	Wire	Amber	330		18.58
46-204-8410	Pasela ProTite	27"	1-1/4"	Tube Type	Single Compound	Wire	Amber	410		18.58
46-204-8440	Pasela ProTite	700c	25mm	Tube Type	Single Compound	Wire	Amber	310		17.99
46-204-8450	Pasela ProTite	700c	28mm	Tube Type	Single Compound	Wire	Amber	330		17.99
46-204-8460	Pasela ProTite	700c	32mm	Tube Type	Single Compound	Wire	Amber	400		20.00
46-204-8470	Pasela ProTite	700c	38mm	Tube Type	Single Compound	Wire	Amber	470		20.00



## Panaracer

### PASELA

- The standard all-around touring and urban commuting tire
- Supple and comfortable ride
- 400D Lite Extra Cord increases side-cut resistance and improves the rigidity

Part #	Model	Dia.	Width	Type	Compound	Bead	TPI	Sidewall	Grams	P5
46-204-6710	Pasela	700c	25mm	Tube Type	Single Compound	Wire	Amber	290		14.99
46-204-6720	Pasela	700c	28mm	Tube Type	Single Compound	Wire	Amber	320		14.99
46-204-6810	Pasela	700c	25mm	Tube Type	Single Compound	Wire	Black	290		14.99
46-204-6820	Pasela	700c	28mm	Tube Type	Single Compound	Wire	Black	320		14.99
46-204-6830	Pasela	700c	32mm	Tube Type	Single Compound	Wire	Black	390		17.50
46-204-6840	Pasela	700c	35mm	Tube Type	Single Compound	Wire	Black	470		17.50
46-204-9000	Pasela	27"	1-1/8"	Tube Type	Single Compound	Wire	Amber	320		17.50
46-204-9010	Pasela	27"	1-1/4"	Tube Type	Single Compound	Wire	Amber	390		17.50



## Panaracer

### AGILEST DURO

- ZSG AGILE COMPOUND reduces rolling resistance
- Provides performance and reliability in races, training and long rides

Part #	Model	Dia.	Width	Type	Compound	Bead	TPI	Sidewall	Grams	P5
46-204-8223	Agilest Duro	700c	25mm	Tube Type	ZSG Agile	Folding	Black	220		29.99
46-204-8224	Agilest Duro	700c	28mm	Tube Type	ZSG Agile	Folding	Black	250		29.99
46-204-8225	Agilest Duro	700c	30mm	Tube Type	ZSG Agile	Folding	Black	280		29.99



## Panaracer

### AGILEST LIGHT

- Ultra-light racing tire with low rolling resistance
- Features ZSG Agile Compound and TOUGH & FLEX SUPER BELT

Part #	Model	Dia.	Width	Type	Compound	Bead	TPI	Sidewall	Grams	P5
46-204-8230	Agilest Light	700c	25mm	Tube Type	ZSG Agile	Folding	Black	170		29.99
46-204-8231	Agilest Light	700c	28mm	Tube Type	ZSG Agile	Folding	Black	190		29.99



## Panaracer

### AGILEST TLR

- Tubeless Ready
- Compatible with hookless rims
- For hookless rims, please refer to the rim manufacturers compatibility chart

Part #	Model	Dia.	Width	Type	Compound	Bead	TPI	Sidewall	Grams	P5
46-204-8242	Agilest TLR	700c	25mm	Tubeless Ready	ZSG Agile	Folding	Black	220		40.00
46-204-8243	Agilest TLR	700c	28mm	Tubeless Ready	ZSG Agile	Folding	Black	250		40.00
46-204-8244	Agilest TLR	700c	30mm	Tubeless Ready	ZSG Agile	Folding	Black	270		40.00
46-204-8245	Agilest TLR	700c	32mm	Tubeless Ready	ZSG Agile	Folding	Black			40.00



## Panaracer GRAVELKING

- Ideal for gravel, dirt, and rough pavement
- Available in Black Tread and Black or Brown Wall Colors
- Folding (Aramid) Bead
- TLR and Hookless Compatible in widths 700 x 30C and wider



Part #	Model	Dia.	Width	Type	Compound	Bead	Sidewall
46-204-8640	GRAVELKING	700c	35 mm	Tubeless Ready	ZSG Gravel	Folding	Brown
46-204-8641	GRAVELKING	700c	40 mm	Tubeless Ready	ZSG Gravel	Folding	Brown

P5
32.50
32.50



## Panaracer GRAVELKING EXT

- Ideal for gravel, dirt, and rough pavement
- Available in Black Tread and Black or Brown Sidewall
- Folding (Aramid) Bead
- TLR and Hookless Compatible



Part #	Model	Dia.	Width	Type	Compound	Bead	Sidewall
46-204-8610	GRAVELKING EXT	700c	38 mm	Tubeless Ready	ZSG Gravel	Folding	Black
46-204-8611	GRAVELKING EXT	700c	45 mm	Tubeless Ready	ZSG Gravel	Folding	Black

P5
32.50
32.50



## Panaracer GRAVELKING EXT PLUS

- Ideal for gravel, dirt, and rough pavement
- Available in Black Tread and Black or Brown Sidewall
- Folding (Aramid) Bead
- TLR and Hookless Compatible



Part #	Model	Dia.	Width	Type	Compound	Bead	Sidewall
46-204-8600	GRAVELKING EXT PLUS	700c	38 mm	Tubeless Ready	ZSG Gravel	Folding	Black
46-204-8601	GRAVELKING EXT PLUS	700c	45 mm	Tubeless Ready	ZSG Gravel	Folding	Black

P5
40.00
40.00



## Panaracer GRAVELKING R

- Ideal for gravel, dirt, and rough pavement
- Available in Black Tread with Brown Wall Colors
- Folding (Aramid) Bead
- TLR and Hookless Compatible in widths 700 x 30C and wider



Part #	Model	Dia.	Width	Type	Compound	Bead	Sidewall
46-204-8500	GRAVELKING R	700c	28 mm	Tubeless Ready	ZSG Gravel	Folding	Amber
46-204-8501	GRAVELKING R	700c	30 mm	Tubeless Ready	ZSG Gravel	Folding	Amber
46-204-8502	GRAVELKING R	700c	35 mm	Tubeless Ready	ZSG Gravel	Folding	Amber
46-204-8503	GRAVELKING R	700c	40 mm	Tubeless Ready	ZSG Gravel	Folding	Amber

P5
40.00
40.00
40.00
40.00



## Panaracer GRAVELKING SLICK

- Ideal for gravel, dirt, and rough pavement
- Available in Black Tread and Black or Brown Wall Colors
- Folding (Aramid) Bead
- TLR and Hookless Compatible in widths 700 x 30C and wider



Part #	Model	Dia.	Width	Type	Compound	Bead	Sidewall
46-204-8630	GRAVELKING SLICK	700c	26 mm	Tubeless Ready	ZSG Gravel	Folding	Black
46-204-8631	GRAVELKING SLICK	700c	28 mm	Tubeless Ready	ZSG Gravel	Folding	Black
46-204-8632	GRAVELKING SLICK	700c	30 mm	Tubeless Ready	ZSG Gravel	Folding	Black
46-204-8633	GRAVELKING SLICK	700c	35 mm	Tubeless Ready	ZSG Gravel	Folding	Black
46-204-8634	GRAVELKING SLICK	700c	40 mm	Tubeless Ready	ZSG Gravel	Folding	Black

P5
32.50
32.50
32.50
32.50
32.50



## SCHWALBE

### TACKY CHAN SUPER DOWNHILL

- The fastest downhill tire in the world
- Developed over two years in World Cup races
- Optimized 100% for precision
- 10% more stable shoulder lugs than the Magic Mary and 8% lighter
- Long braking edges allow later braking point
- Open shoulder area provides direct feedback and improves self-cleaning
- Ramps on center lugs for optimal rolling characteristics
- Produced with fair trade rubber

The new Schwalbe Tacky Chan unfolds its full potential when pushed to the limit with an aggressive riding style. Its aggressive character lives up to the funky name, while the available casing and compound variants are well suited to the tire's intended use – no paper-thin XC casings and hard rubber compounds here. *-Enduro Mountain Bike Magazine*

Part #	Model	Dia.	Width	Type	Compound	Bead	TPI	Color	Grams	P5
46-637-2501	Tacky Chan	27.5" / 5842.40"	2.40"	Tubeless Ready	Addix Ultra Soft	Folding	60	Black	1250	56.47
46-637-2550	Tacky Chan	29" / 622 2.40"	2.40"	Tubeless Ready	Addix Ultra Soft	Folding	60	Black	1320	56.47



## SCHWALBE

### TACKY CHAN SUPER GRAVITY

- The fastest downhill tire in the world
- Developed over two years in World Cup races
- Optimized 100% for precision
- 10% more stable shoulder lugs than the Magic Mary and 8% lighter
- Long braking edges allow later braking point
- Open shoulder area provides direct feedback and improves self-cleaning
- Ramps on center lugs for optimal rolling characteristics
- Produced with fair trade rubber

Part #	Model	Dia.	Width	Type	Compound	Bead	TPI	Color	Grams	P5
46-637-2502	Tacky Chan	27.5" / 5842.40"	2.40"	Tubeless Ready	Addix Soft	Folding	60	Black	1165	56.47
46-637-2551	Tacky Chan	29" / 622 2.40"	2.40"	Tubeless Ready	Addix Ultra Soft	Folding	60	Black	1240	56.47



## SCHWALBE

### TACKY CHAN SUPER TRAIL

- The fastest downhill tire in the world
- Developed over two years in World Cup races
- Optimized 100% for precision
- 10% more stable shoulder lugs than the Magic Mary and 8% lighter
- Long braking edges allow later braking point
- Open shoulder area provides direct feedback and improves self-cleaning
- Ramps on center lugs for optimal rolling characteristics
- Produced with fair trade rubber

Part #	Model	Dia.	Width	Type	Compound	Bead	TPI	Color	Grams	P5
46-637-2552	Tacky Chan	29" / 622 2.40"	2.40"	Tubeless Ready	Addix Ultra Soft	Folding	60	Black	1080	53.06
46-637-2553	Tacky Chan	29" / 622 2.40"	2.40"	Tubeless Ready	Addix Soft	Folding	60	Black	1080	53.06



## SCHWALBE

### ALBERT GRAVITY PRO

- Radial carcass allows for a larger contact patch
- Literally sticks to the ground as the tire deforms more precisely
- Many lugs for maximum control and good durability

Part #	Model	Dia.	Width	Type	Compound	Bead	TPI	Color	Grams	P5
46-637-3000	Albert Gravity Pro	29" / 622	2.50"	Tubeless Ready	Addix Soft	Folding	60	Black	1330	56.47
46-637-3001	Albert Gravity Pro	29" / 622	2.50"	Tubeless Ready	Addix Ultrasoft	Folding	60	Black	1330	56.47
46-637-3005	Albert Gravity Pro	29" / 622	2.60"	Tubeless Ready	Addix Soft	Folding	60	Black	1350	56.47
46-637-3006	Albert Gravity Pro	29" / 622	2.60"	Tubeless Ready	Addix Ultrasoft	Folding	60	Black	1350	56.47





## SCHWALBE

### SHREDDA PRO FRONT

- Radial carcass allows for a larger contact patch
- Significantly filters road irregularities
- Virtually sticks to the ground as the tyre deforms
- Profile optimised for radial carcass
- Open tread design with high tread depth for excellent traction

Part #	Model	Dia.	Width	Type	Compound	Bead	TPI	Sidewall	Grams	P5
46-637-3203	Shredda Front 29" / 622	2.50"	2.50"	Tubeless Ready	Addix Ultrasoft	Folding		Black	1450	56.47



## SCHWALBE

### SHREDDA PRO REAR

- Radial carcass allows for a larger contact patch
- Significantly filters road irregularities
- Virtually sticks to the ground as the tyre deforms
- Profile optimised for radial carcass
- Open tread design with high tread depth for excellent traction

Part #	Model	Dia.	Width	Type	Compound	Bead	TPI	Sidewall	Grams	P5
46-637-3204	Shredda Rear 29" / 622	2.50"	2.50"	Tubeless Ready	Addix Ultrasoft	Folding		Black	1500	56.47



## SCHWALBE

### RICK XC PRO

- Combines grip and low rolling resistance like no other Schwalbe XC tire
- Faster than Racing Ralph and has more grip than Thunder Burt
- TLR: tubeless ready
- Addix Speedgrip: improved damping, grip and durability
- E-25 rated

Part #	Model	Dia.	Width	Type	Compound	Bead	TPI	Sidewall	Grams	P5
46-637-0370	Rick XC Pro	29" / 622	2.25"	Tubeless Ready	Addix Speed	Folding		Transparent Skin	680	53.06
46-637-0371	Rick XC Pro	29" / 622	2.25"	Tubeless Ready	Addix Speedgrip	Folding		Black	680	53.06
46-637-0372	Rick XC Pro	29" / 622	2.40"	Tubeless Ready	Addix Speed	Folding		Transparent Skin	760	53.06
46-637-0373	Rick XC Pro	29" / 622	2.40"	Tubeless Ready	Addix Speedgrip	Folding		Black	760	53.06



## SCHWALBE

### WICKED WILL

- Fast rolling midsection with ramp-like lugs
- Smooth transition area for maximum control when cornering
- Stable and grippy shoulder knobs for high support

Part #	Model	Dia.	Width	Type	Compound	Bead	TPI	Color	Grams	P5
46-637-0182	Wicked Will	29" / 622	2.25"	Tubeless Ready	Addix Performance	Folding		Black	705	35.94
46-637-0183	Wicked Will	29" / 622	2.25"	Tube Type	Addix Performance	Folding		Black	705	29.10
46-637-0185	Wicked Will	29" / 622	2.40"	Tubeless Ready	Addix Performance	Folding		Black	950	35.94
46-637-0186	Wicked Will	29" / 622	2.40"	Tube Type	Addix Performance	Folding		Black	760	29.10
46-637-0187	Wicked Will	29" / 622	2.40"	Tubeless Ready	Addix Speedgrip	Folding		Black	830	53.06
46-637-0189	Wicked Will	29" / 622	2.40"	Tubeless Ready	Addix Speedgrip	Folding		Bronze	845	53.06
46-637-0191	Wicked Will	29" / 622	2.60"	Tube Type	Addix Performance	Folding		Black	810	29.10
46-637-0192	Wicked Will	29" / 622	2.60"	Tubeless Ready	Addix Speedgrip	Folding		Black	900	53.06
46-637-0193	Wicked Will	29" / 622	2.60"	Tubeless Ready	Addix Speedgrip	Folding		Black	980	53.06



## SCHWALBE

### MARATHON PLUS MTB

- Popular center rib tread for noiseless running on pavement
- Sturdy outer blocks make occasional off-roading easy
- SmartGuard puncture resistance
- Fast rolling

Part #	Model	Dia.	Width	Type	Compound	Bead	TPI	Color	Grams	P5
46-637-3640	Marathon Plus	26" / 5591.75"	1.75"	Tube Type	Endurance	Wire		Black	995	32.52



## THULE® PACK 'N PEDAL BASKET

- Lightweight basket is designed to safely accommodate small and large items
- Easy to install and remove with readily available tools
- Attaches to bike rack decks/rails on the front or rear of the bike
- Rack sold separately
- Fits best on Thule racks, but will work on virtually any bike rack



Part #	Color	Model	Cu. In.	P5
03-510-4040	Black	Pack 'n Pedal		65.23

## TOPEAK MTX BEAMRACK II - A TYPE \*Updated version 2025

- Aluminum rack with bolt mount for 25.4-31.8mm seat post
- fit 26"-29" MTB and 700C gravel bikes
- MTX QuickTrack / QuickTrack2.0 / MIK system trunk bags



Part #	Model	Color	Grams	P5
06-081-2151	A-Type	Black	722	37.98

## TOPEAK MINI MORPH \*Updated version 2025

- Folding T-Handle makes pumping easy and comfortable
- Fold-out food pad creates a stable floor pump like experience
- Flexible hose for ease of use
- Centerline mount bracket allows mounting with straps or bottle bosses



Part #	Model	Color	Grams	P5
13-081-2351	Mini Morph	Black	154	19.24

## TOPEAK SHUTTLE LEVER PRO

- Magnetic tire lever wrench set
- Three-piece combination that makes changing tires smoother and easier
- Engineering Grade Polymer
- 140 x 20 x 7.8 cm (long) 105 x 20 x 19.6 cm (short)
- Features magnetic nesting



Part #	Model	Color	Grams	P5
16-081-4005	Shuttle Lever Pro	Yellow/Black	41	6.06

Suggested retail 11.95

## TRAIL-A-BIKE HITCH CONVERSION BLOCK

- For 1998 and earlier Trail-A-Bike models
- Converts older 12mm mounts to the current 15mm size



Part #	Model	Size	SALE
14-092-2910	1998-earlier	12 to 15 mm	5.63



## GROOVY BARREL ADJUSTERS

- Machined from custom extruded 6061 alloy
- Specific shape, threading, and locknut
- Quick and easy on-the-fly brake cable adjustments



Part #	Color	Grams	Qty.	P5
86-480-0020	Red	9	9	27.00
86-480-0021	Purple	9	9	27.00
86-480-0022	Gold	9	9	27.00
86-480-0023	Blue	9	9	27.00
86-480-0024	Black	9	9	27.00
86-480-0025	Orange	9	9	27.00

Suggested retail 40.00



## BABY GROOVY BARREL ADJUSTERS

- Machined from custom extruded 6061 alloy
- Specific shape, threading, and locknut
- Quick and easy on-the-fly brake cable adjustments



Part #	Color	Grams	Qty.	P5
86-480-0030	Red	6	6	27.00
86-480-0031	Purple	6	6	27.00
86-480-0032	Gold	6	6	27.00
86-480-0033	Blue	6	6	27.00
86-480-0034	Black	6	6	27.00
86-480-0035	Orange	6	6	27.00

Suggested retail 40.00



## SLINGSHOT PRO 210 USB

- 210 lumens of powerful brightness
- Cycling Tuned Optics throws a long range, extra wide beam
- Daytime visible flashes keeps rider highly visible
- 7 adjustable lighting modes for night and day use
- Steady, Zoom, SteadyPulse, Bzzz Flash, Triple Flash, DayLightning, Flash
- Flash, and Random Flash
- Adjustable brightness and flash speed with patented built-in OSP
- Two-button design lets rider fine tune brightness and flash speeds
- Expand run times beyond factory default settings



Part #	Model	Grams	P5
02-622-8500	Slingshot 210		26.74

Suggested retail 49.95



## SLINGSHOT ENDURANCE 160 USB

- 160 lumens of powerful brightness
- Cycling Tuned Optics throws a long range, extra wide beam
- Daytime visible flashes keeps rider highly visible
- 7 adjustable lighting modes for night and day use
- Steady, Zoom, SteadyPulse, Bzzz Flash, Triple Flash, DayLightning, Flash
- Flash, and Random Flash



Part #	Model	P5
02-622-8510	Slingshot 160	24.04

Suggested retail 44.95

## ONGUARD®

### ROCKSOLID

- Proprietary blend of ultra high-strength materials
- Reinforced with a multi-layered defence system
- Virtually impervious to angle grinders



Part #	Model	Type	Size	P5
08-081-0280	Rocksolid	Key	3.5 x 6.9"	162.47

Suggested retail 249.95

## ONGUARD®

### ZIP LOCK

- A lightweight, stainless-steel core zip-tie style combo lock
- Features a three digit resettable combination
- Can be daisy- chained together for extended locking length
- Can be used separately or daisy-chained together for extended locking length



Part #	Model	Type	Color	Length	P5
08-081-1130	Zip Lock	Combo	Black	22 in.	7.48

Suggested retail 14.95

## ONGUARD®

### ZIP LOCK 2-PACK

- Lightweight, stainless-steel core zip-tie style combo lock
- 3-digit resettable combination
- 22 inches in length
- Can be used separately or daisy-chained together for extended locking length



Part #	Model	Type	Color	Length	P5
08-081-1131	Zip Lock 2-Pack	Combo	Yellow, Black	22 in.	13.98

Suggested retail 27.95



### DOG RUNNER

- Updated design of our Dog Runner
- Seatpost mount
- Uses same quick release as our surf racks
- Adjustable shock absorbing leash
- Fits seatposts 25-35mm in diameter



Part #	Model	P5
06-544-0051	Dog Runner	44.89

Suggested retail 80.00



### E-BIKE SURF RACK

- Intended for bikes with M6 tapped mounting holes
- Compatible with e-Bikes (Murf, RAD, others)
- Can mount to either bolt on / welded on rear racks
- Compatible with fat tire e-bikes



Part #	Model	Includes	P5
06-544-0115	e-Bike Rack		71.39

Suggested retail 135.00

## CAT EYE®

### OUT FRONT BRACKET



- Compatible with CatEye Wireless computers excluding V series and Adventure
- Mounts on right side of stem

Part #	Model	Model	Qty.	P5
09-211-0210	OF-100	Black	1	8.57

## CAT EYE®

### OUT FRONT BRACKET 2



- Aluminum bracket compatible with CatEye Wireless computers and headlights
- Mounts on both sides of stem

Part #	Model	Model	Qty.	P5
09-211-0211	OF-200	Black	1	27.98

## CAT EYE®

### MIRROR

- Keep an eye on other cars and cyclists behind you
- Minimal projection
- Clean aesthetics
- Aluminum and glass construction
- Inserts into the end of handlebars
- Fits both drop and flat handlebars



Part #	Model	Color	Grams	P5
00-211-0600	BM-45	Black	35	9.45

Suggested retail 17.49

## CAT EYE®

### CR2032 BATTERY



- Maxell CR2032 3V battery
- Sold individually

Part #	Model	Qty.	P5
09-211-9990	CR2032	1	1.19

## SARIS

### BONES BIKE RACK

- Arc-based design fits over most spoilers
- Design separates bikes on different levels
- Injection-molded arms and legs are the strongest on the market
- Rubberized feet protect car and coated straps protect bike
- Spring buckle straps with vinyl-coated hooks
- Strongest frame on the market
- Built with 100 percent recyclable materials



Part #	Model	Bikes	Color	P5
07-420-0010	Bones 2-Bike Trunk Rack	2-Bikes	Black	130.88
07-420-0020	Bones 3-Bike Trunk Rack	3-Bikes	Black	150.51

Suggested retail 199.99  
Suggested retail 229.99

# Yellow Jersey Promotion

Buy At Least One Item From Each Featured Vendor  
AND Receive 5% OFF Your Entire Parts Order!

**STOP & GO**

**KALI**  
PROTECTIVES  
**squirt**

**Genuine INNOVATIONS**



Offer valid 2/1/25 through 2/15/25 or while quantities last. Minimum Purchase \$5.00 per Vendor.  
Not to be used with other offers. Terms Code: 5%ACH, 5%CC, 5%30NET31, **5%60NET61 (Orders of \$1000+)**

**KHS**

KHS, Inc.  
2840 E. Harcourt St.  
Rancho Dominguez, CA 90221

**FULL FREIGHT ALLOWANCE  
WITH ANY \$500  
KHS PARTS ORDER**

\*Full Freight Allowance is limited to a Maximum of 9% per invoice total

Prices Valid From Feb. 1-15, 2025  
KHS is not responsible for any typographical, photographic, or item description errors listed in this publication

**FREEAGENT**

## FREE AGENT SNAPBACK HAT

- Heavy-duty cotton snap-fit cap
- Free Agent logo embroidered on front panels
- Round FA logo embroidered on back left panel
- Semi-structured crown
- Flat visor
- Snapback closure



**NEW!**

Part #	Color	Size	P5
24-301-1140	Red/Black/Black	Adjustable	13.20

Suggested retail/MAP 25.99

**Park Tool**

## BO-6 BOTTLE OPENER

- Retailers may not sell on Amazon unless authorized in writing by Park Tool
- .
- A premium bottle opener modeled after our iconic PW-4 pedal wrench
- Two offset wrench openings for optimal mechanical advantage
- And a long vinyl-dipped handle for maximum leverage
- Made in the USA from laser-cut 304 stainless steel for a lifetime of use
- Compatible with glass bottles that feature pry-off caps including



**NEW!**

Part #	Model	P5
87-003-0035	BO-6	18.55

## KHS IS A SHIMANO PARTS DISTRIBUTOR

**KHS**

### KHS 50th ANNIVERSARY

- 50 Years of Performance logos front and back
- 100% super soft cotton

**NEW!**



Part #	Model	Color	Size	P5
21-000-5001	50th	Black	M	10.58
21-000-5002	50th	Black	L	10.58
21-000-5003	50th	Black	XL	10.58
21-000-5004	50th	Black	XXL	10.58

**KHS**

### 1975 HAT

- KHS Bicycles Since 1975 logo embroidered in yellow and white stitching
- Bicycle of Champions embroidered in white stitching on the back
- Open back style with adjustable Hook and Loop closure
- Full curved visor
- 100% Polyester

**NEW!**



Part #	Color	Size	P5
24-000-0971	Navy Blue	One Size Fits Most	8.27

Suggested retail/MAP 16.59



ENDURANCE FUELS  
& SUPPLEMENTS